

Appendix I

Scottish Women Artists Acquisition Fund

This is a representative selection of works for potential acquisition by West Dunbartonshire Council through the Scottish Women Artists Acquisition Fund. Each work included has been considered in the context of the collecting principles described in the West Dunbartonshire Council Acquisitions, Disposal and Collections Development Policy.

Works described below were available for purchase during April 2021.

Mary Armour

Clyde from Skelmorlie

Oil

50 x 60cm

£ 4500

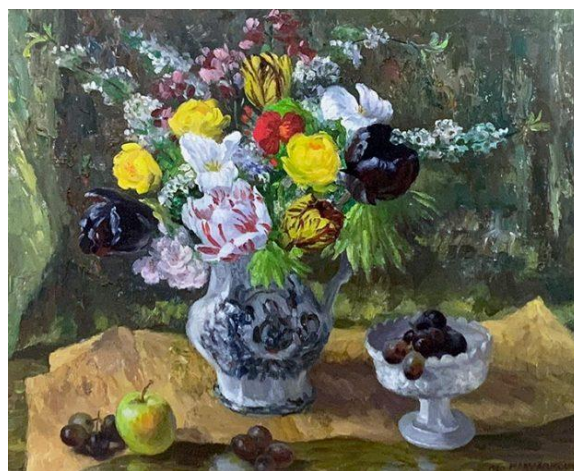


Still life with black tulips and trillium 1980

Oil on canvas

51cm x 64 cm

£ 11000



Mary Armour trained at the Glasgow School of Art from 1920 to 1924. Her still life paintings with flowers represent some of her most characteristic works. However, Armour also painted other still lifes and stated her own desire to be remembered in particular for her seascapes.

Armour learned from contemporaries such as the artist Anne Redpath and her close friend David Donaldson. In the 1950s Armour's brushwork became freer and her colour palette brightened – later works are more reminiscent of the Scottish Colourists' approach to painting.

As one of a group of designers and artists known as the Glasgow Girls, Armour gained critical acclaim through various exhibitions at the Royal Scottish Academy, the Royal Scottish Society of Painters in Watercolour and the Royal Glasgow Institute of Fine Arts.

Elizabeth Blackadder

Japanese Garden Kyoto

Etching

46cm x 43.5cm

£1,310



One of Scotland's most prominent living artists, acquisition of this work would augment representation of Blackadder in WDC's fine art collection. This etching is representative of a pivotal period in Blackadder's artistic career, reflective of her artistic style thereafter. In style and period it complements the existing WD example.

Katherine Cameron

Storm Approaching Taynuilt

Pencil and watercolour

13cm x 22cm

£950



Katherine Cameron was a contemporary of the Scottish Colourists and studied at Glasgow School of Art. As a member of a group of designers and artists known as the Glasgow Girls, Cameron was influenced by Jessie M. King and Charles Rennie Mackintosh, among others. This delicate landscape would complement existing work by the artist held in the WDC fine art collection, and would bring to the collection a beautifully rendered west of Scotland landscape.

Kate Downie

The Quarry Path to the Sea

Screenprint on Arches Paper (edition of 100)

70cm x 103cm

unframed

£800



In recent years Downie has established herself as one of Scotland's most prominent artists and has been described as *"one of the most subtle and persuasive colourists of her generation"*. Through connectivity to the Scottish Colourists; as a printmaker showing Japanese influences; and through work defined by a strong sense of place, this screenprint by Downie represents a strong potential addition to WDC's fine art collection.

Annie French

Emerald Flower Girls

Ink & Watercolour

6cm x 12.5cm

£1800



Man Reading

Ink & Watercolour

20cm x 12.5cm

£2000



Annie French was a Scottish painter, engraver, illustrator and designer associated with the Glasgow School and contemporary with the Scottish Colourists. French's notable illustrations would make strong companion pieces for the Jessie M King illustration and book already held in the WDC fine art collection.

Jessie M King

Girl in a Tunic

Ink & Watercolour

28cm x 19cm

£5000



The Coffin

Ink & Watercolour

27cm x 19cm

£8000



He Kissed the Closed Eyelids

Ink & Watercolour

24cm x 20cm

£8000



Jessie M King was a Scottish book illustrator, jewellery and fabric designer. She was part of a group of designers and artists known as the Glasgow Girls. With existing work by King held in the WDC fine art collection, each of the works shown above has relevance in further enhancing and complementing the wider collection. In addition, works by King would sit alongside any existing works and/or acquisitions by both Annie French and Katherine Cameron.

Bet Low

From the Rooftop (Glasgow)

Ink & wash

21cm x 32cm

£950



This work on paper by Bet Low would complement existing work by the artist held in the WDC fine art collection. It represents a rare early work by Low and would serve to broaden understanding within the collection of the artist's west of Scotland references and inspiration. In subject matter, genre and style this work aligns well to the wider fine art collection.

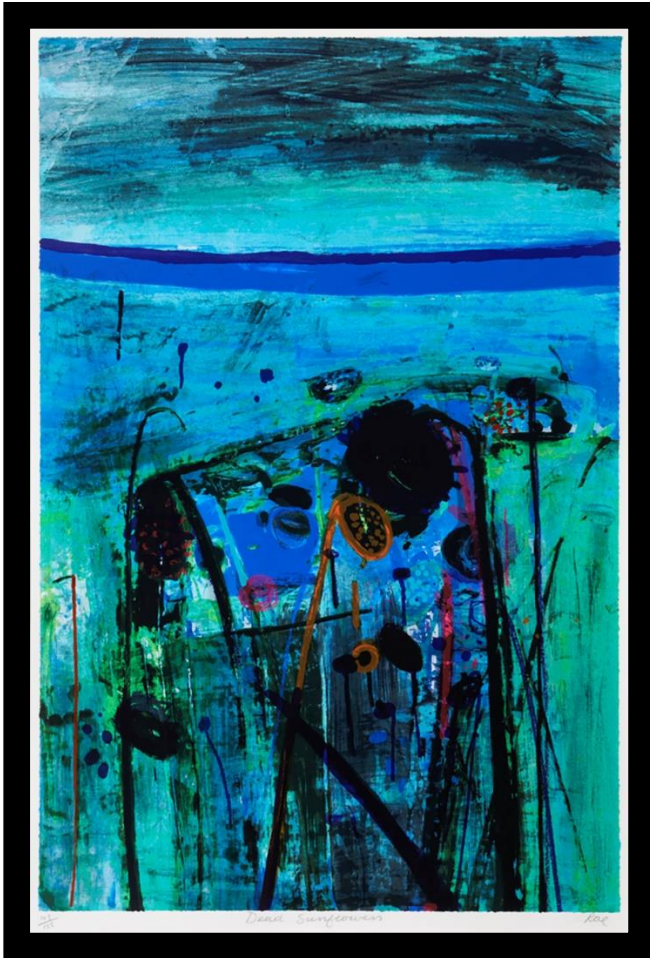
Barbara Rae

Dead Sunflowers

Screenprint

57cm x 76cm

£2,500



The landscape and history of the west coast of Scotland has inspired much of Rae's art. Described as an internationally recognised 'Colourist' and one of Scotland's foremost artists, a work by Rae would complement WDC's existing Scottish Colourists collection and related works. Rae's leanings towards Abstract Expressionism further echo the wider influences also felt by the Colourists.

Anne Redpath

Still Life with White Jug

Oil on board

32cm x 25cm

£27,500



Anne Redpath was one of Scotland's most significant 20th century artists. She was an immediate beneficiary of the legacy of the Scottish Colourists. Like the Colourists, Redpath lived and worked in France. This work echoes the Colourists' exploration of still life as a subject worthy of contemporary painting, a premise that strongly influenced Redpath. This work is an excellent example of that influence and would complement existing work by the artist held in the WDC collection.

Kirsty Wither

Lush Square

Oil on Canvas

20cm x 20cm

£900



A working contemporary artist, Scottish born and trained Wither is described as “*a contemporary colourist*”. The Colourist heritage is apparent throughout her work as she paints brightly coloured and textured still lifes, figures and landscapes. With genres affiliated to existing works in the WDC collections acquisition of this work would represent huge potential in terms of future exhibition programming.

Georgie Young

Thunderplump

Acrylic on Board

79 x 79 cm (framed)

£2,200



A graduate of Glasgow School of Art, Young works in the genre of Scottish landscapes. Creating atmosphere and a sense of place are integral to her working practice. Interest in the interplay of light, time, weather and season on everyday landscapes echo the Scottish Colourists in both work and practice, and suggest influence by Joan Eardley whose work is already represented in the WDC Collection.