

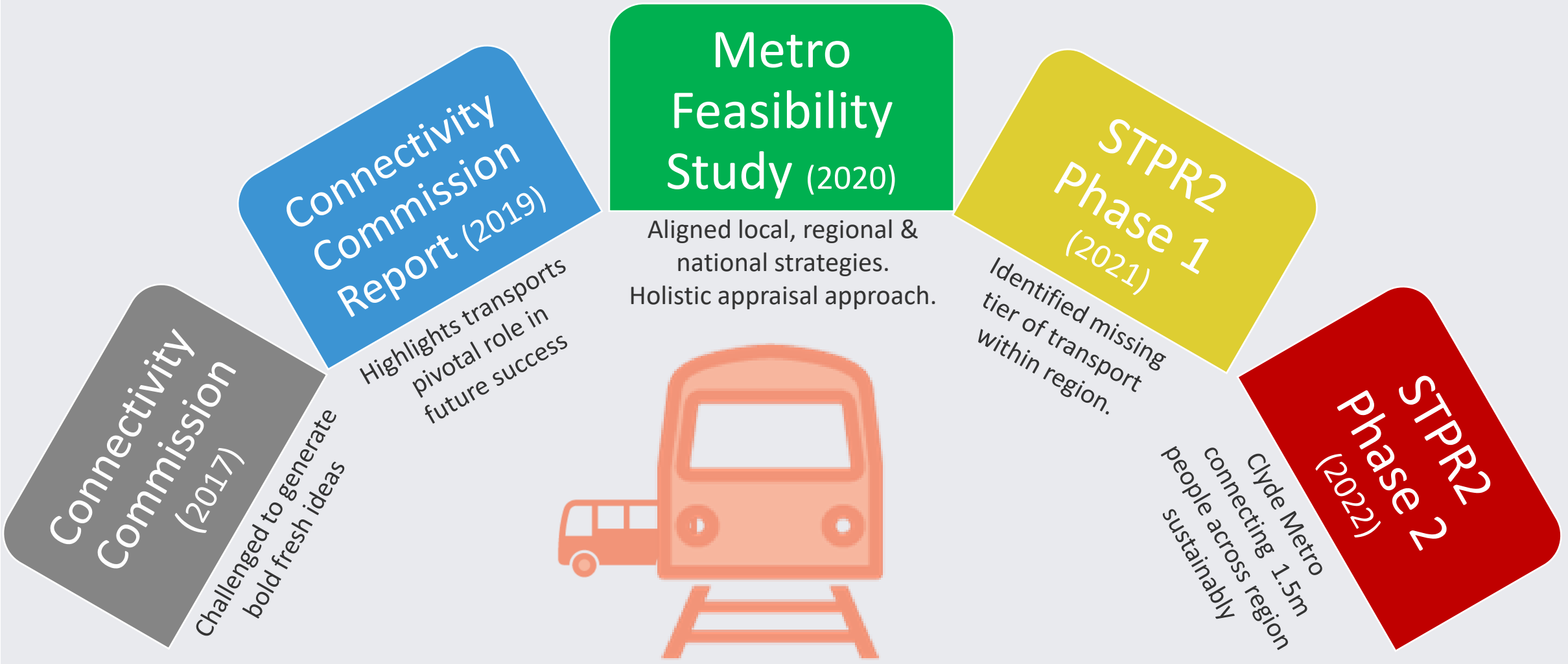
Clyde Metro STPR2 Announcement Briefing & Next Steps

Update to CEG 03 Feb 22

OFFICIAL



The Metro journey so far



Clyde Metro

Clyde Metro will offer an **integrated public transport system** for the City Region where **bus rapid transit, tram, light rail and/or metro rail** will complement the existing subway, bus and heavy rail networks offering effective alternatives to car. It will target at **improving connectivity** whilst contributing to the **City Region's ambitions** to improve the health and wellbeing of its people by delivering an inclusive, net zero and climate resilient economy.



Clyde Metro focuses on:

- i. Unserved and underserved areas with relatively poor connectivity;
- ii. Improving access to key hubs such as the city centre, hospitals, major education facilities, key employment centres, retail hubs, and major leisure/sports facilities; and
- iii. Integrating with major transport hubs and creation of new interchange opportunities.



Metro Plus: Putting links in place to transform



Housing Strategies - Deliver high quality, innovative, spacious and sustainable homes within active travel neighbourhoods. Connect communities, including those areas in greatest need to employment, leisure and culture and opportunities



NPF4, Place making, LDPs, City Deal, City Centre Population Strategy, Vacant and Derelict Land, 20 Min Neighbourhoods, Clyde Mission Themes, Scottish Future's Trust.



PHS Strategic Plan 2020-23
UN Sustainable Goals: Health and Wellbeing - access to hospitals, healthcare, transport and poverty reduction, air and noise pollution, mental health.



Local / City Transport Strategies.
National / Regional Transport Strategies. Integrated ticketing, affordable travel
Bus Partnership Fund.



Policies - Active Travel, Car Km Reduction Plan, Active Freeways, Car Free Zones, Modal Shift, Staff Travel Plans



Climate Change Plan Update 2020. Climate Ready Clyde - Climate Mitigation, Climate Adaptation, Net Zero Targets, Environmental Protection, Carbon Reduction, Noise Pollution, Air Quality,



Economy Investment

Regional Economic Strategy- attract and retain skills, address long standing barriers, increase housing and commercial completions, support investment, entrepreneurship,

OFFICIAL

Clyde Metro (11): Wider STPR2 Recommendations Relationship

Recommendation	Direct	Enabling	Supporting
Improving active travel infrastructure			
(1) Connected neighbourhoods (2) Active freeways (3) Village-town active travel connections (4) Connecting towns by active travel			+
Influencing travel choices and behaviour			
(6) Behaviour change initiatives (7) Changing road user behaviour (8) Increasing active travel to school (9) Improving access to bikes			+
Enhancing access to affordable public transport			
(12, 13) Edinburgh & South East Scotland, Aberdeen Mass Transit (14) Provision of strategic bus priority measures (19) Infrastructure to provide access for all at railway stations (20) Investment in DRT and MaaS (21) Improved public transport passenger interchange facilities (23) Smart integrated public transport ticketing	+	+	+
Decarbonising Transport			
(25, 26) Decarbonisation of Rail and Bus network		+	
Strengthening Strategic Connections			
(45) High speed and cross border rail enhancements			+

Clyde Metro Next Steps

Area:	Task:
Public Consultation	<ul style="list-style-type: none"> • Support promotion of consultation process. • Review all the STPR2 published reports across 45 interventions and provide consultation feedback to support their assessment. • Consolidate MSAG feedback to STPR2 Consultation – cross referencing to ensure Metro Plus and ‘Metro First’ approach. • Consultation period: 20 Jan – 15 Apr
Communication / Engagement	<ul style="list-style-type: none"> • Support TS Comms Plan. Continue to build pace and momentum. Engage with key stakeholders to realise the ‘bolder ambition’ of Metro. • TCPG – 4 Feb • GCR Cabinet – 15 Feb • MSAG (+TCPG) – 16 Feb • RTS – March • Glasgow LTS – March • Regional engagement – March/April
Collaborative / Partnership Working	<ul style="list-style-type: none"> • Continue to work with TS and SPT to develop preparatory work to support the interim phase and work towards securing Clyde Metro as a final recommendation with funding to progress the OBC/FBC. • The final STPR2 recommendations expected to be confirmed in Autumn 2022 • Scope out early interim governance arrangements and OBC work plan • Clyde Metro Programme Steering Group to be established to meet in Feb/Mar 22.



Clyde Metro – Emerging Programme Considerations

Major complex development programme

- Bold transformational focus, multi – mode and multi – partner
- Large ambition (c. 2 x Manchester MetroLink)
- Significant funding ask - est £11 – 16Bn
- Multi – decade implementation
- Needs credible delivery approach, manage expectations and transition challenges and with quick wins

Interim governance arrangements and OBC work plan

- Political Oversight, Programme Steering Group, Client Delivery Group and **Delivery teams**
- Programmes covering: strategic governance, transformation, stakeholder/partner engagement, network development, commercials & funding



Questions?

