

SQA Appendix 1 - Insight Charts and Significance Statements for individual establishments in West Dunbartonshire

Note about Insight

Schools and education authorities have made their data available to others in a spirit of co-operation and trust.

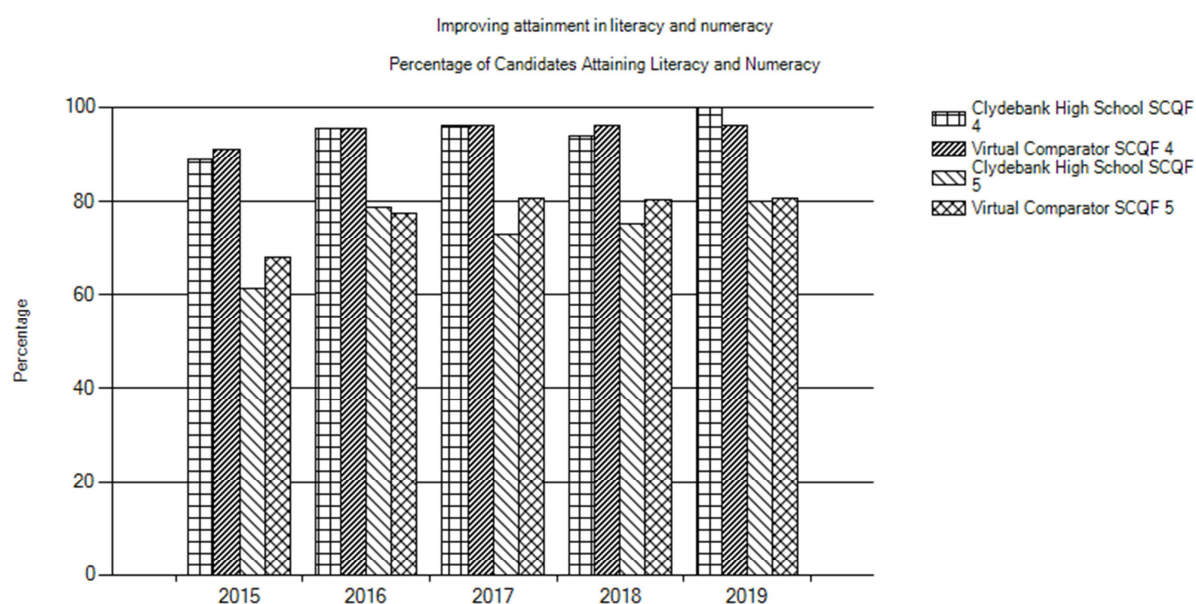
Access is provided to assist colleagues in the delivery of their professional duties. Of particular note, users of Insight agree not to seek to identify individuals from the information provided, for which they have no direct professional responsibility. All data in the tool (including downloaded tables) should be treated as carefully as other confidential pupil data.

Data in the tool are provided to all education authorities and schools on the understanding that they will be used for self-evaluation, professional reflection and benchmarking purposes only and that they will NOT be used publicly, directly or indirectly, to draw comparisons. Insight data should also not be used publicly unless appropriate disclosure control has been implemented to prevent the identification of individuals.

The Crown retains copyright of Insight and other publications. As with all Crown Copyright material, users must acknowledge its source and must not use such information to mislead or to advertise a particular product or service.

Clydebank High School

Percentage of S6 Candidates Attaining Literacy and Numeracy

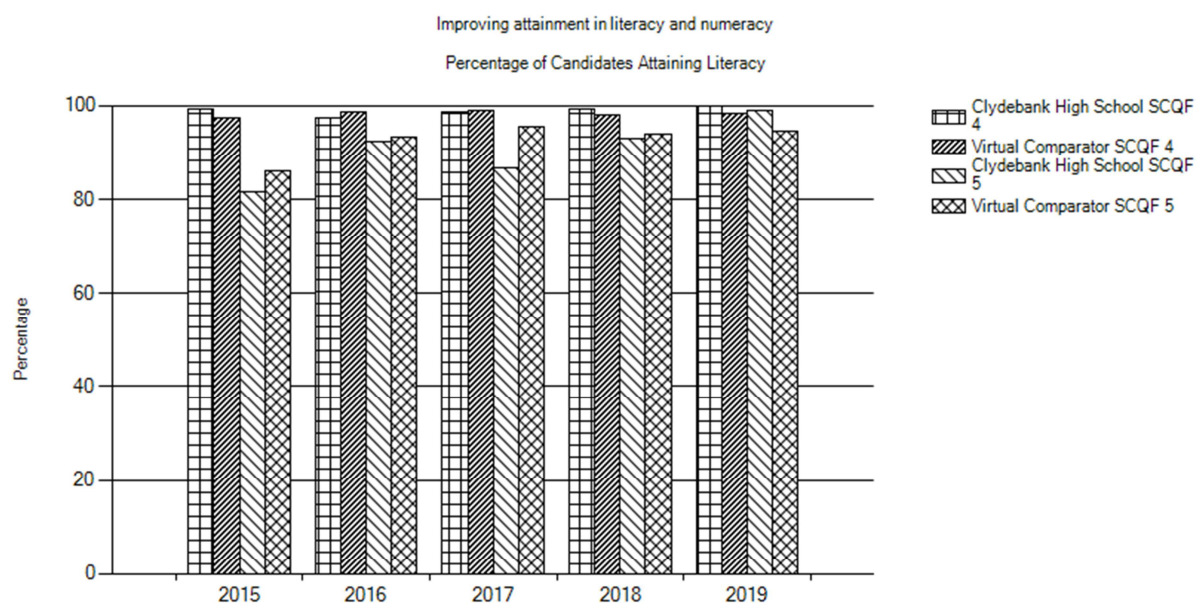


Testing found that the following comparisons were significant:

Performance in Literacy and Numeracy at SCQF Level 4, 2019 is much greater than your Virtual Comparator

Performance in Literacy and Numeracy at SCQF Level 5, 2017 is lower than your Virtual Comparator

Percentage of S6 Candidates Attaining Literacy

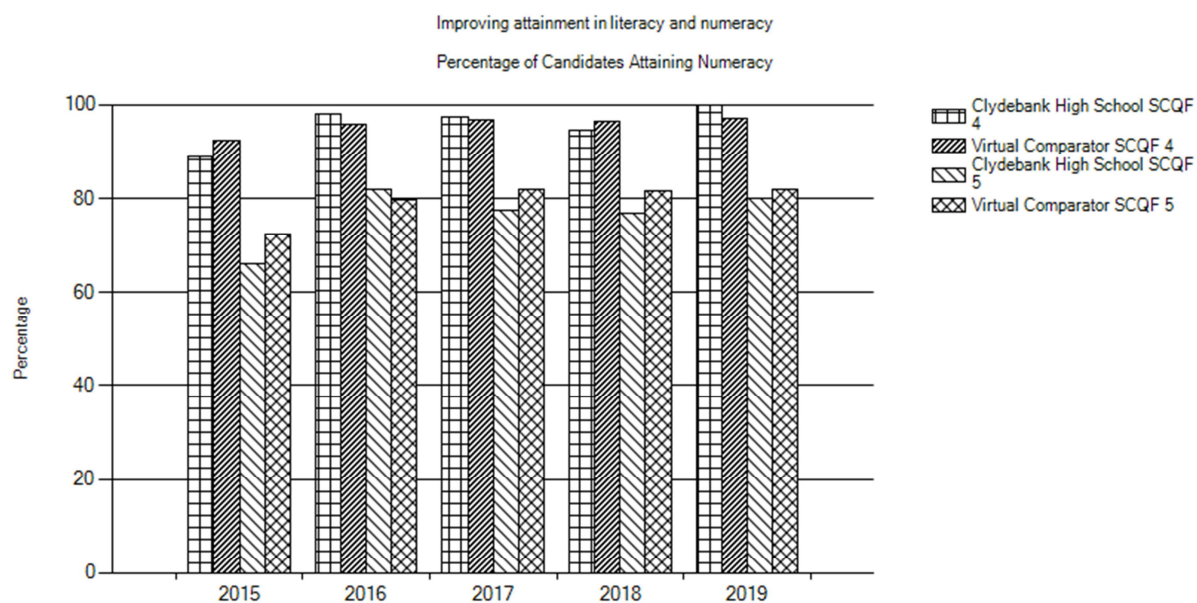


Testing found that the following comparisons were significant:

Performance in Literacy at SCQF Level 5, 2019 is much greater than your Virtual Comparator

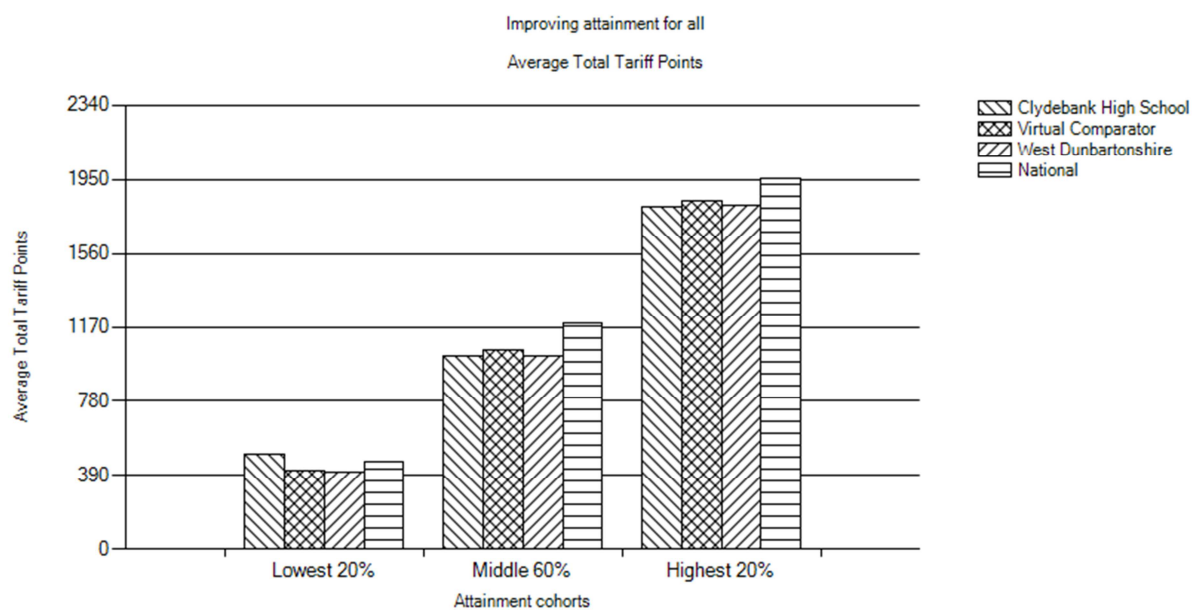
Performance in Literacy at SCQF Level 5, 2017 is much lower than your Virtual Comparator

Percentage of S6 Candidates Attaining Numeracy



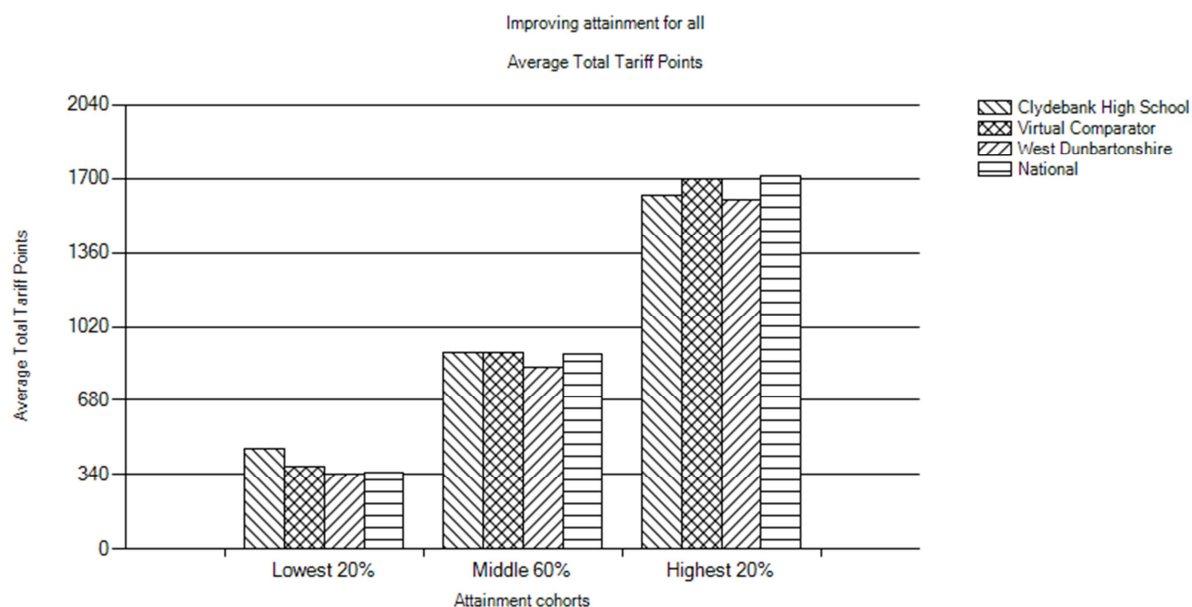
Testing found that there were no significant comparisons for this measure.

Improving Attainment for All – S6 2019



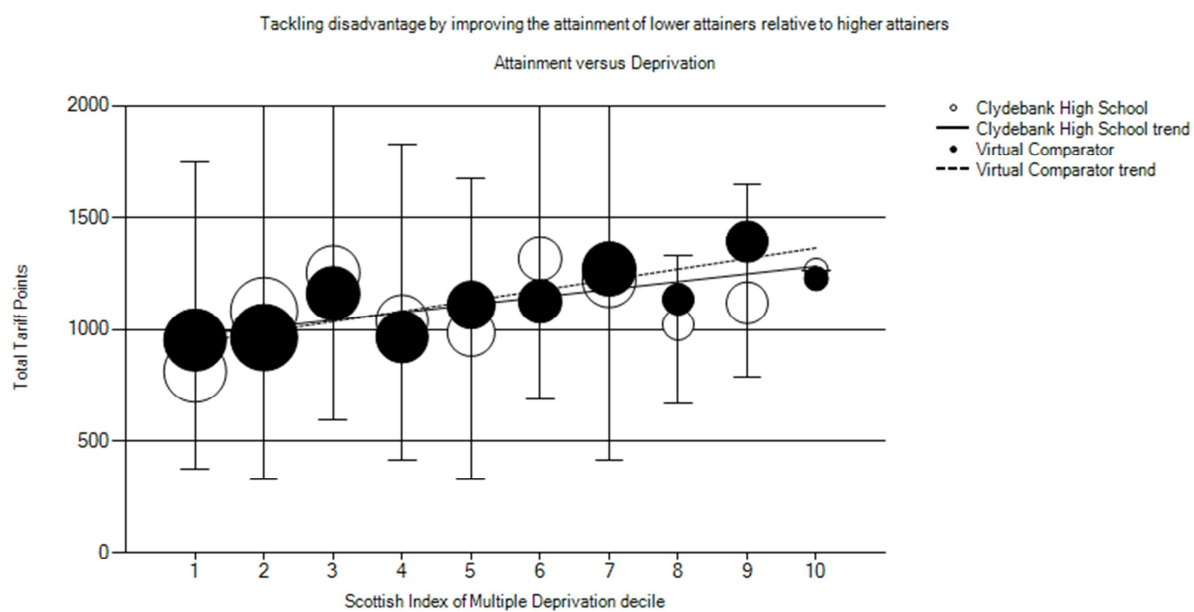
Testing found that there were no significant comparisons for this measure.

Improving Attainment for All – SIMD Deciles 1-4 (Most Deprived 20%) - S6 2019



The significance of comparisons was not tested.

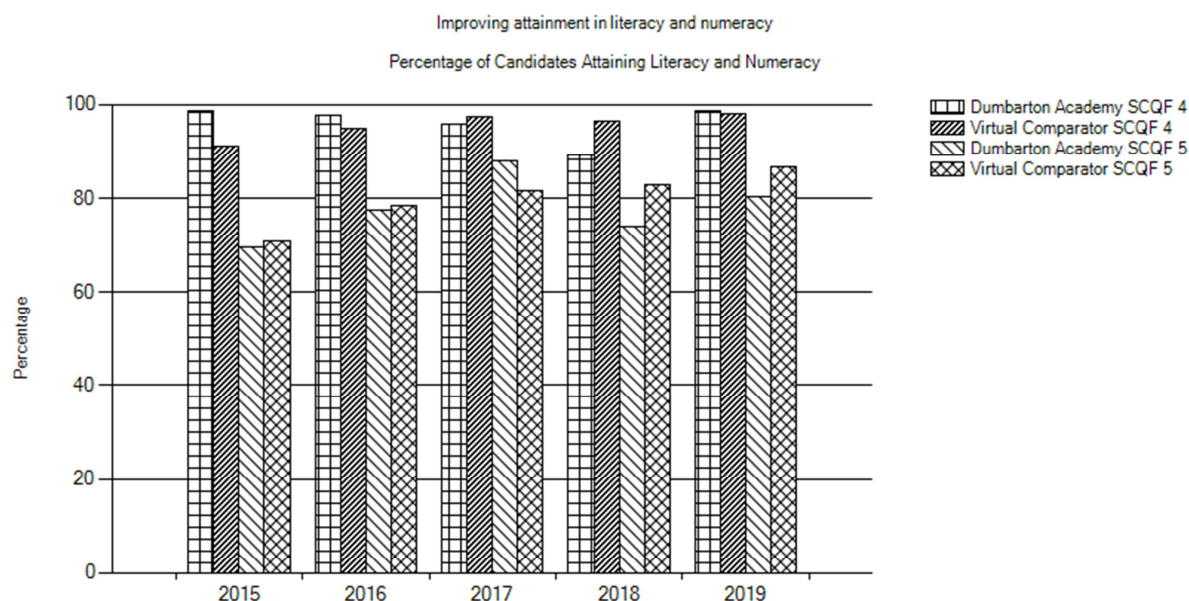
Attainment versus Deprivation – S6 2019



Testing found that there were no significant comparisons for this measure.

Dumbarton Academy

Percentage of S6 Candidates Attaining Literacy and Numeracy

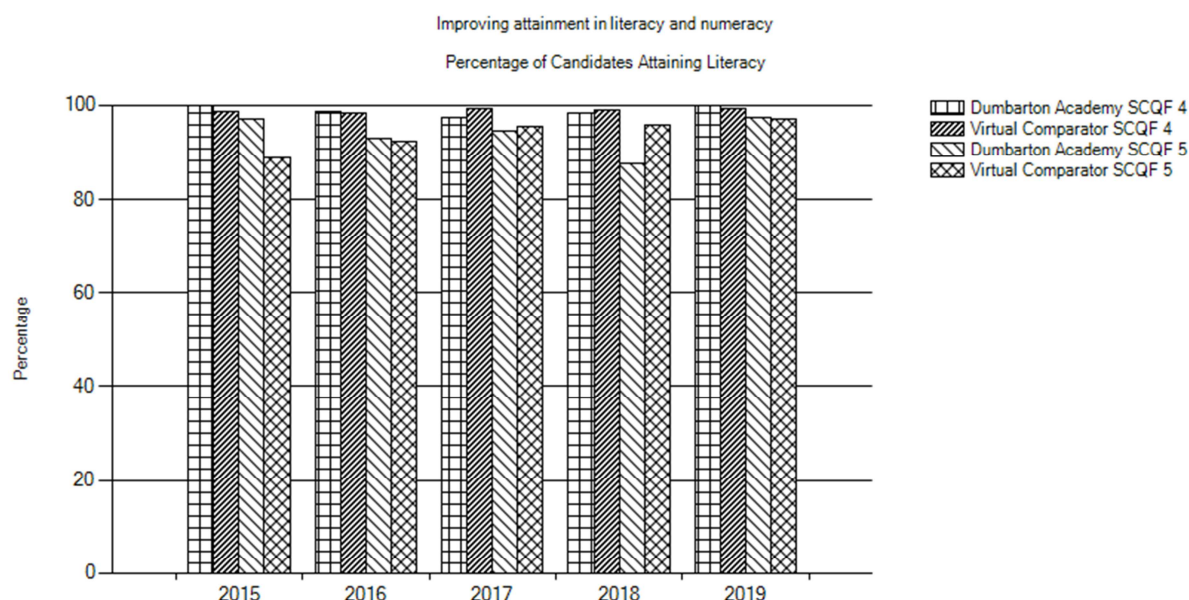


Testing found that the following comparisons were significant:

Performance in Literacy and Numeracy at SCQF Level 4, 2018 is much lower than your Virtual Comparator

Performance in Literacy and Numeracy at SCQF Level 4, 2015 is much greater than your Virtual Comparator

Percentage of S6 Candidates Attaining Literacy

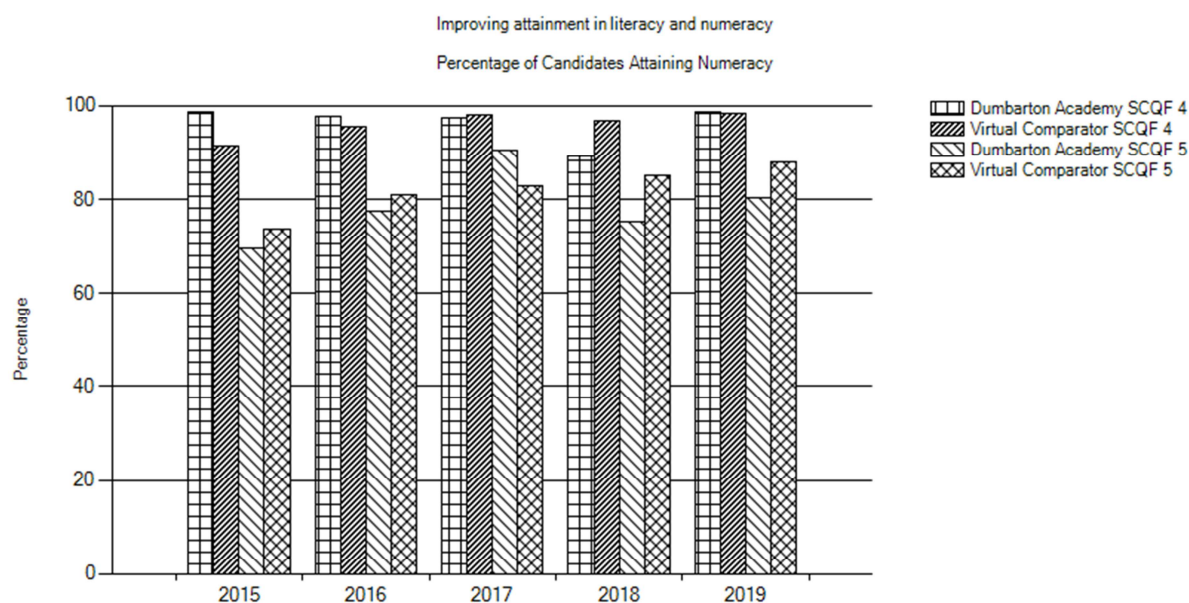


Testing found that the following comparisons were significant:

Performance in Literacy at SCQF Level 5, 2018 is much lower than your Virtual Comparator

Performance in Literacy at SCQF Level 5, 2015 is much greater than your Virtual Comparator

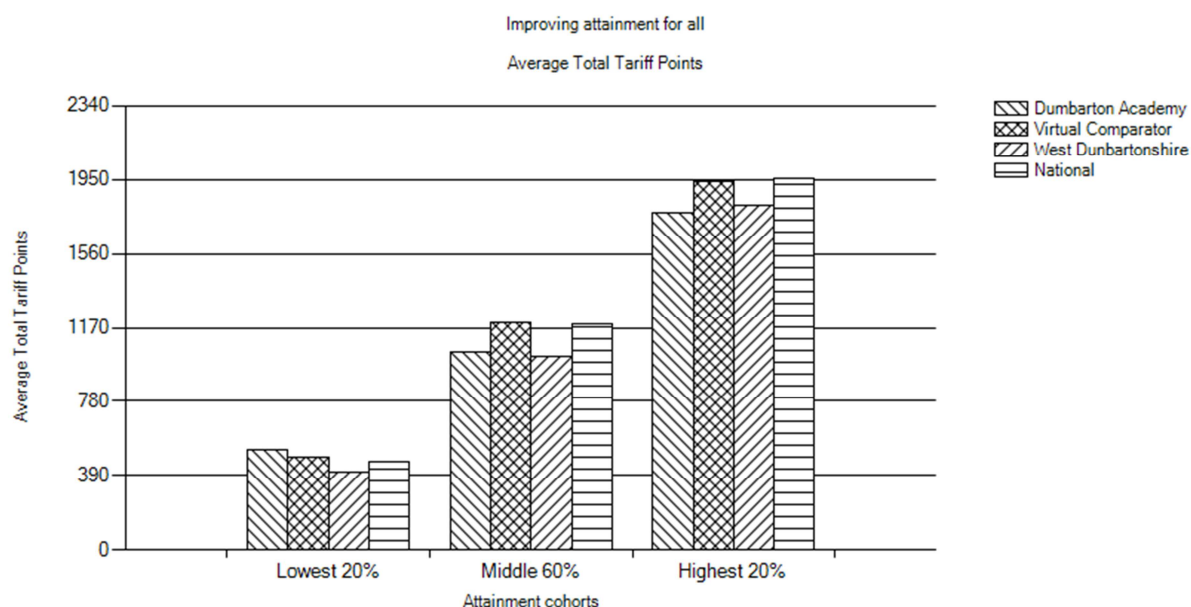
Percentage of S6 Candidates Attaining Numeracy



Testing found that the following comparisons were significant:

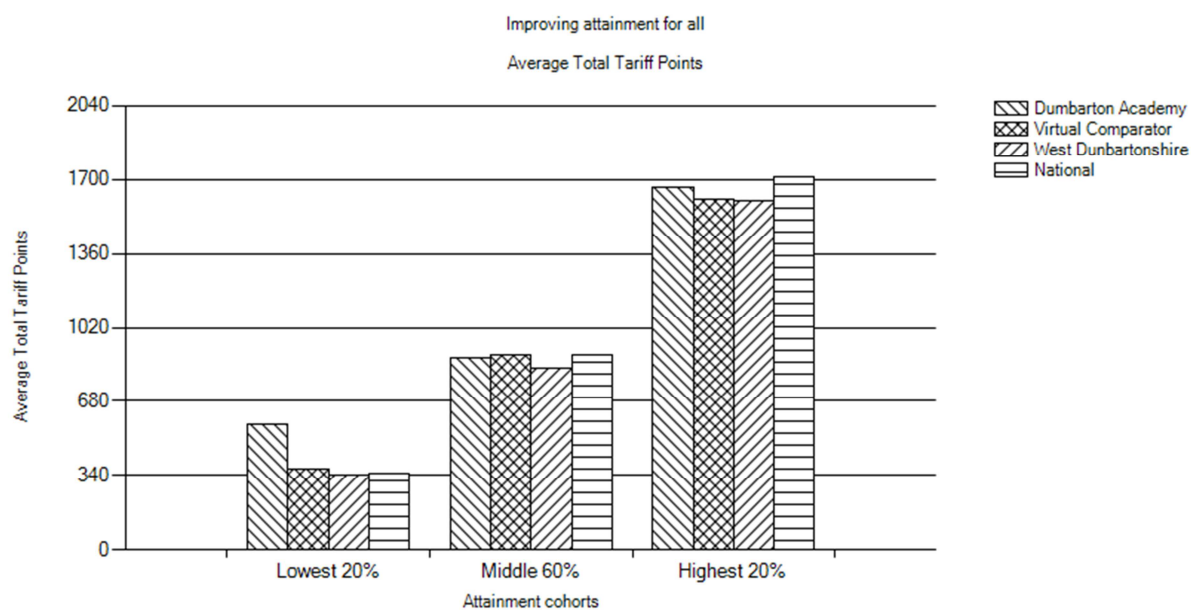
Performance in Numeracy at SCQF Level 5, 2019 is lower than your Virtual Comparator
 Performance in Numeracy at SCQF Level 4, 2018 is much lower than your Virtual Comparator
 Performance in Numeracy at SCQF Level 5, 2018 is lower than your Virtual Comparator
 Performance in Numeracy at SCQF Level 4, 2015 is much greater than your Virtual Comparator

Improving Attainment for All – S6 2019



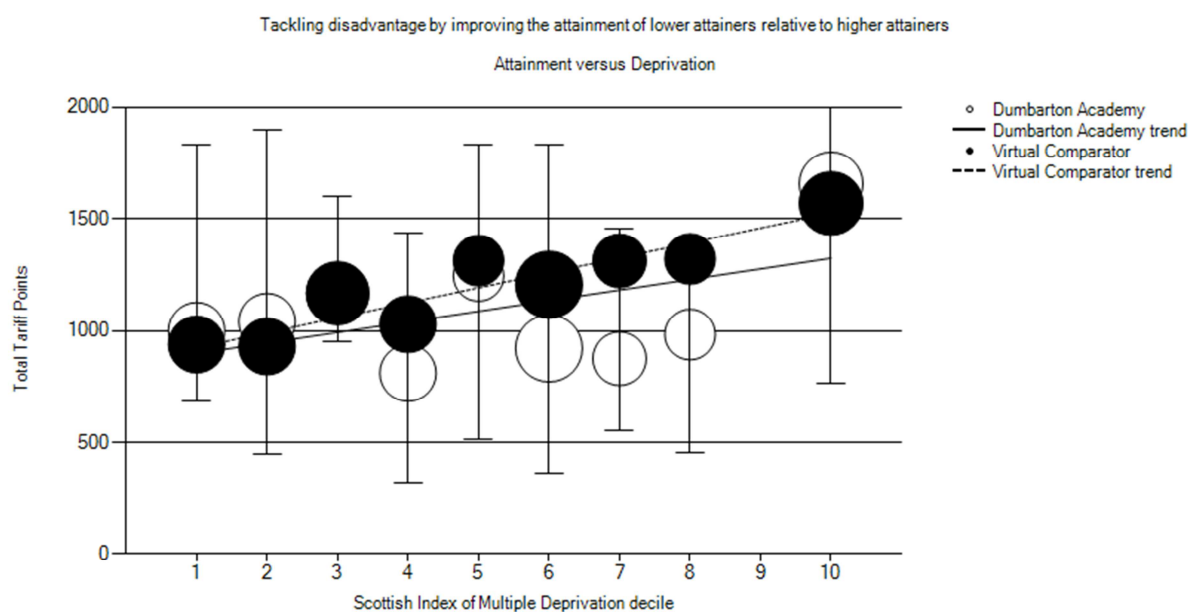
Testing found that there were no significant comparisons for this measure.

Improving Attainment for All – SIMD Quintile 1 (Most Deprived 20%) - S6 2019



The significance of comparisons was not tested.

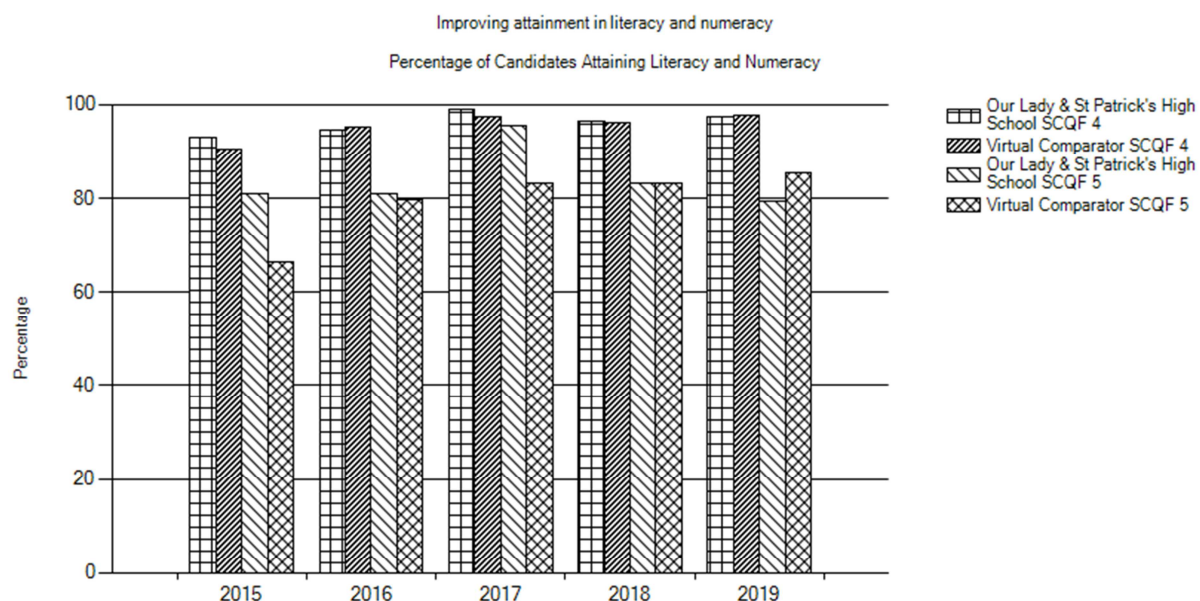
Attainment versus Deprivation – S6 2019



Testing found that there were no significant comparisons for this measure.

Our Lady and St. Patrick's High School

Percentage of S6 Candidates Attaining Literacy and Numeracy

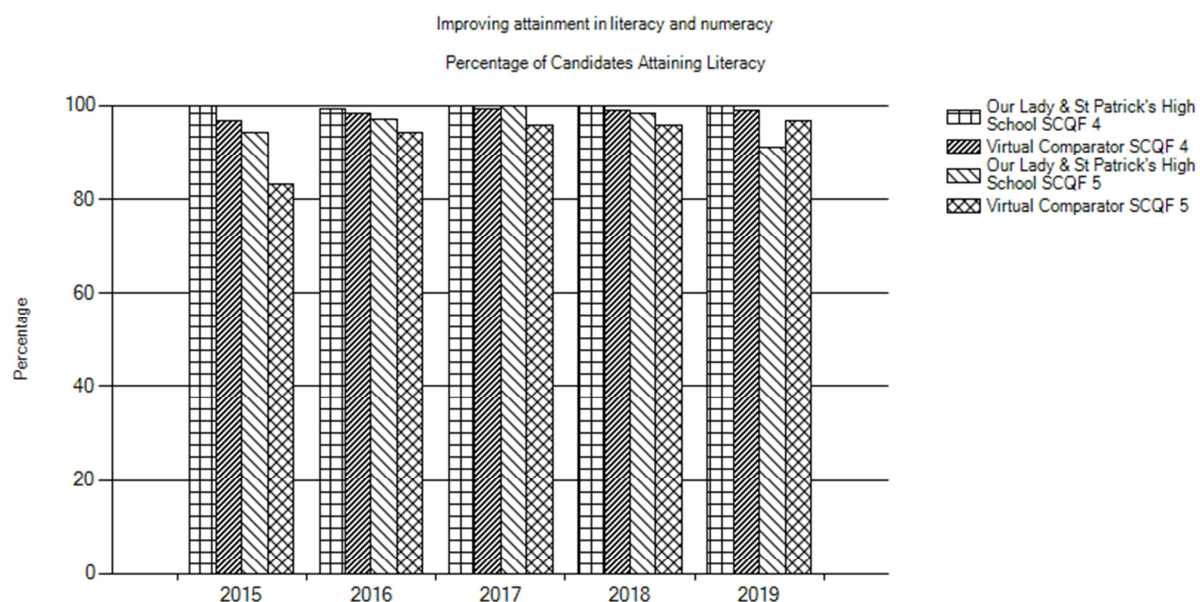


Testing found that the following comparisons were significant:

Performance in Literacy and Numeracy at SCQF Level 5, 2017 is much greater than your Virtual Comparator

Performance in Literacy and Numeracy at SCQF Level 5, 2015 is much greater than your Virtual Comparator

Percentage of S6 Candidates Attaining Literacy



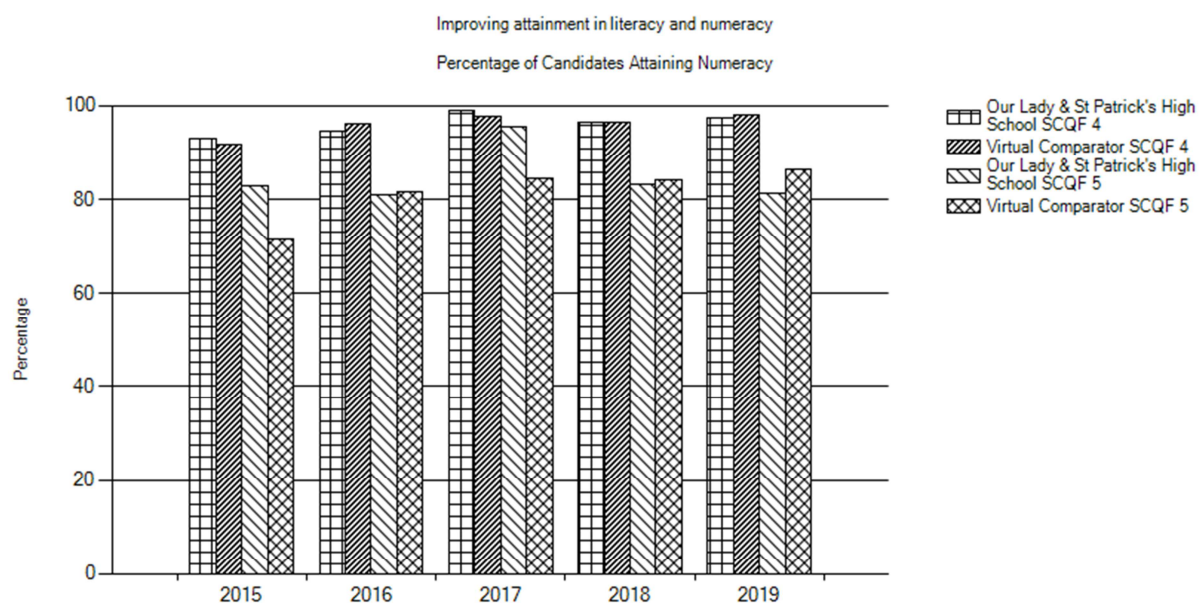
Testing found that the following comparisons were significant:

Performance in Literacy at SCQF Level 5, 2019 is lower than your Virtual Comparator

Performance in Literacy at SCQF Level 4, 2015 is much greater than your Virtual Comparator

Performance in Literacy at SCQF Level 5, 2015 is much greater than your Virtual Comparator

Percentage of S6 Candidates Attaining Numeracy

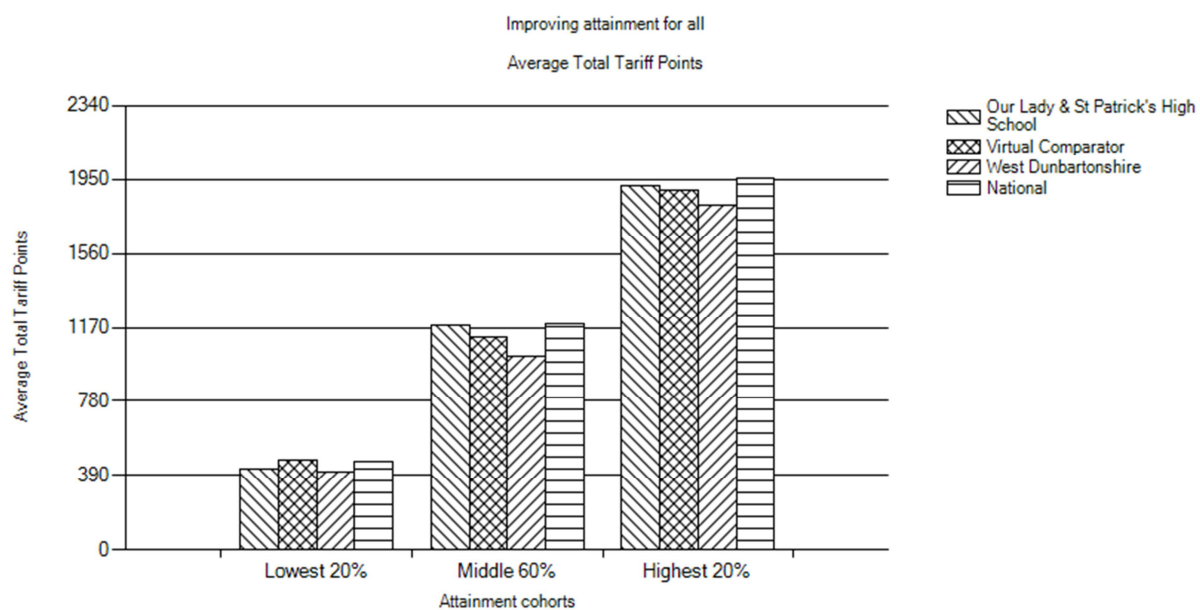


Testing found that the following comparisons were significant:

Performance in Numeracy at SCQF Level 5, 2017 is much greater than your Virtual Comparator

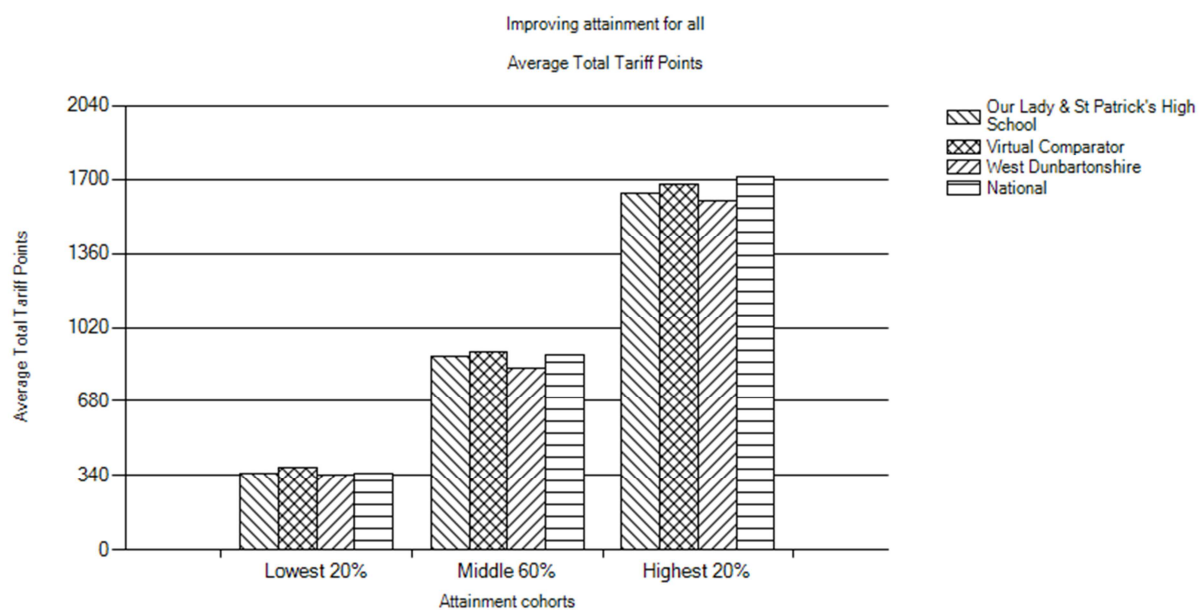
Performance in Numeracy at SCQF Level 5, 2015 is greater than your Virtual Comparator

Improving Attainment for All – S6 2019



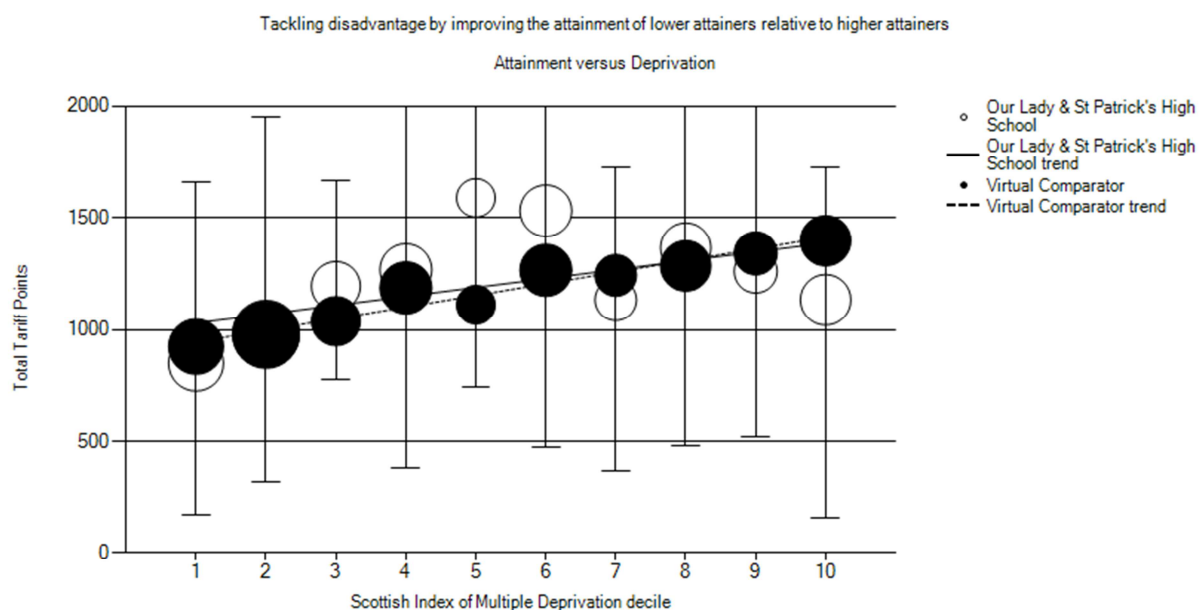
Testing found that there were no significant comparisons for this measure.

Improving Attainment for All – SIMD Quintile 1 (Most Deprived 20%) - S6 2019



The significance of comparisons was not tested.

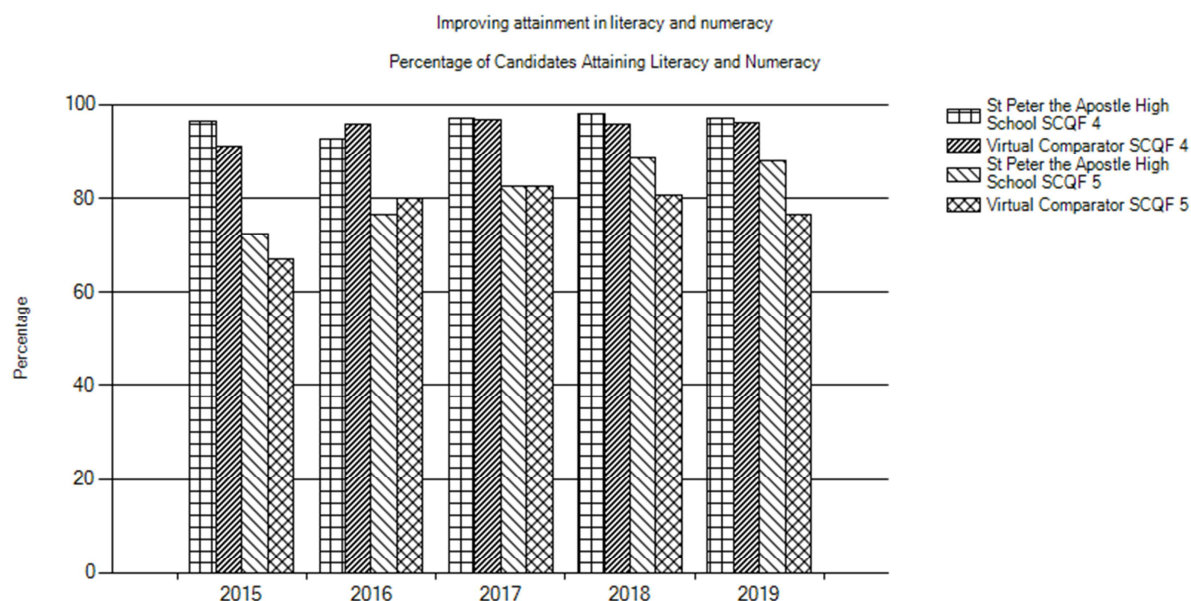
Attainment versus Deprivation – S6 2019



Testing found that there were no significant comparisons for this measure.

St. Peter the Apostle High School

Percentage of S6 Candidates Attaining Literacy and Numeracy



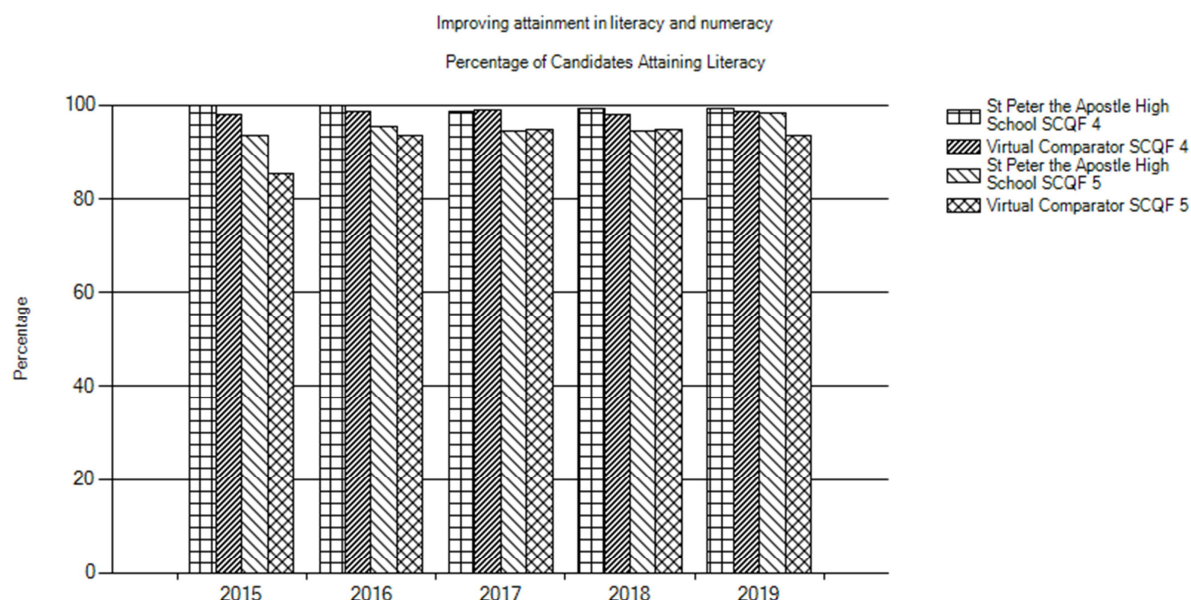
Testing found that the following comparisons were significant:

Performance in Literacy and Numeracy at SCQF Level 5, 2019 is much greater than your Virtual Comparator

Performance in Literacy and Numeracy at SCQF Level 5, 2018 is greater than your Virtual Comparator

Performance in Literacy and Numeracy at SCQF Level 4, 2015 is much greater than your Virtual Comparator

Percentage of S6 Candidates Attaining Literacy

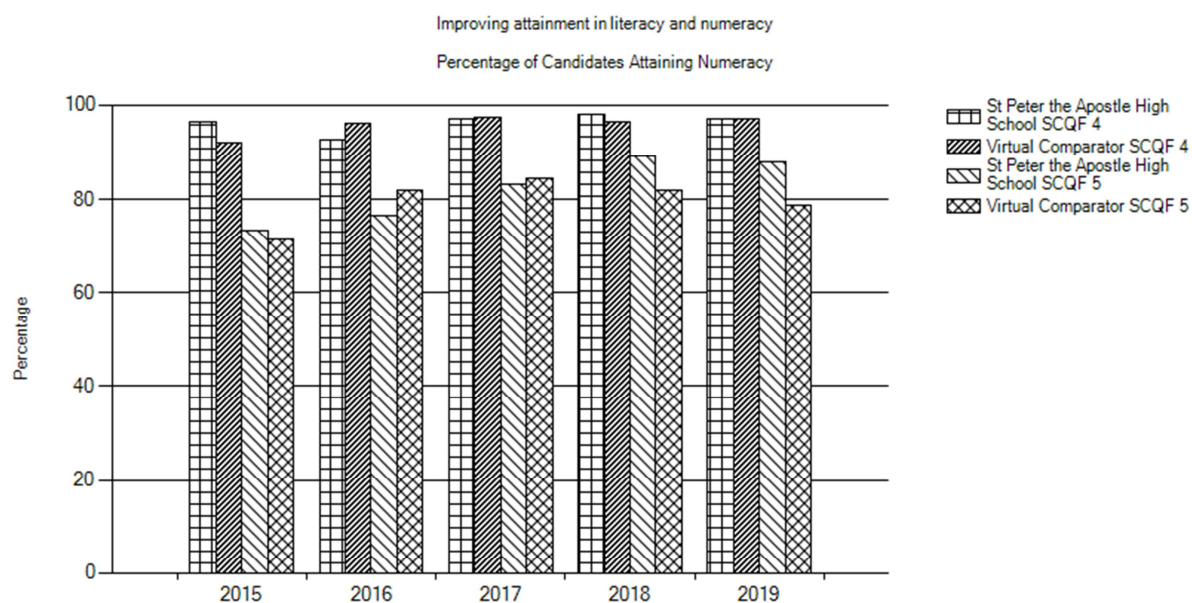


Testing found that the following comparisons were significant:

Performance in Literacy at SCQF Level 5, 2019 is much greater than your Virtual Comparator

Performance in Literacy at SCQF Level 5, 2015 is much greater than your Virtual Comparator

Percentage of S6 Candidates Attaining Numeracy



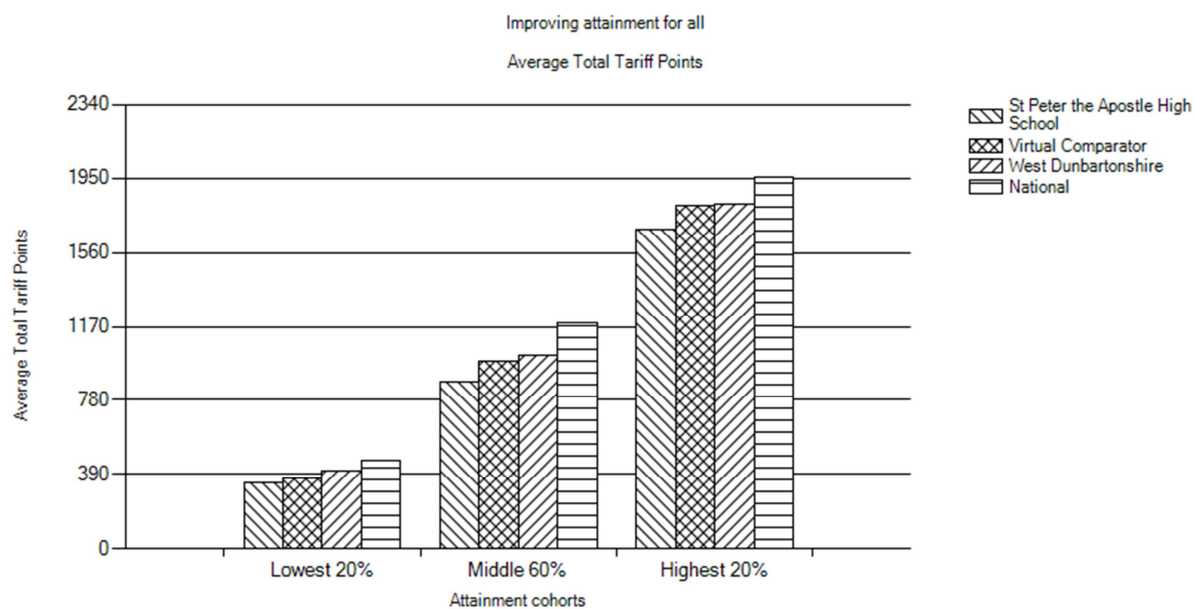
Testing found that the following comparisons were significant:

Performance in Numeracy at SCQF Level 5, 2019 is greater than your Virtual Comparator

Performance in Numeracy at SCQF Level 5, 2018 is greater than your Virtual Comparator

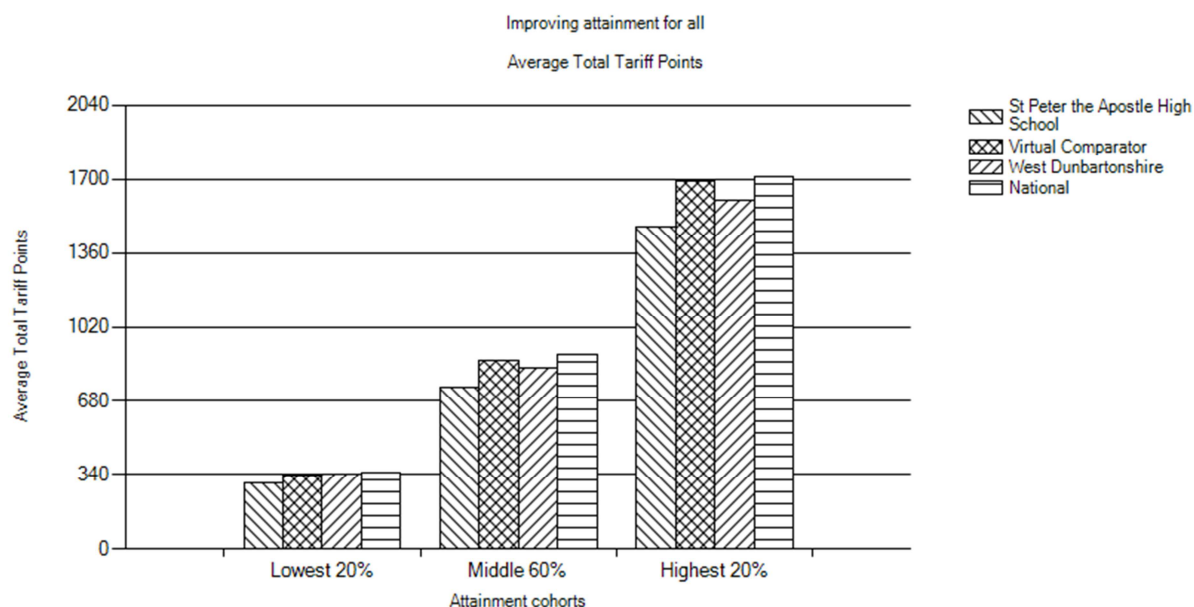
Performance in Numeracy at SCQF Level 4, 2015 is greater than your Virtual Comparator

Improving Attainment for All – S6 2019



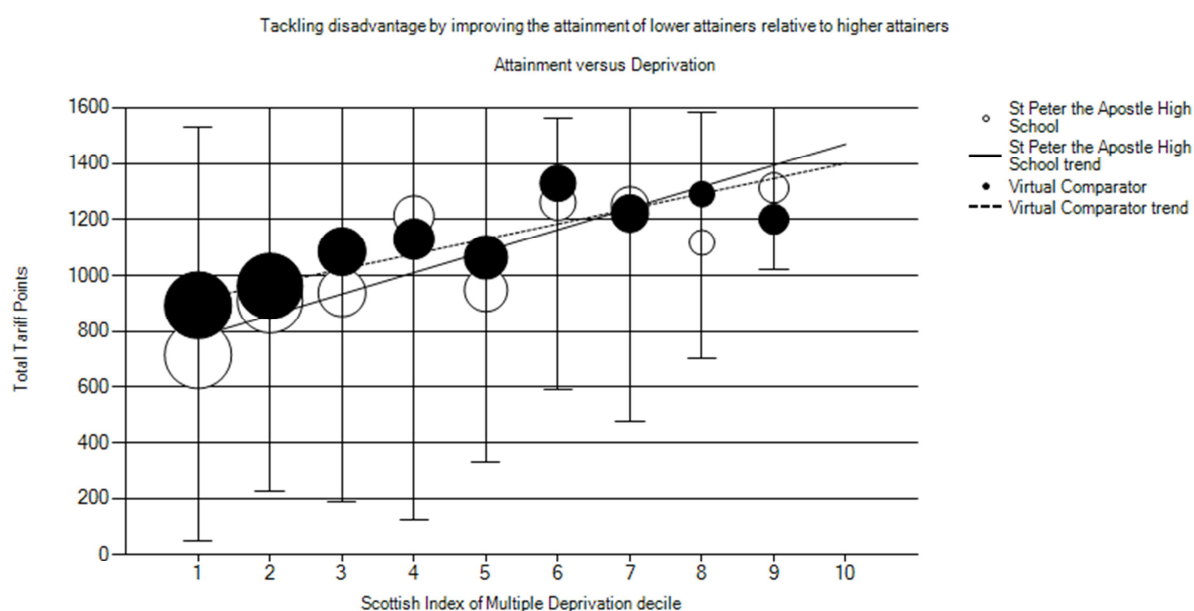
Testing found that there were no significant comparisons for this measure.

Improving Attainment for All – SIMD Quintile 1 (Most Deprived 20%) - S6 2019



The significance of comparisons was not tested.

Attainment versus Deprivation – S6 2019

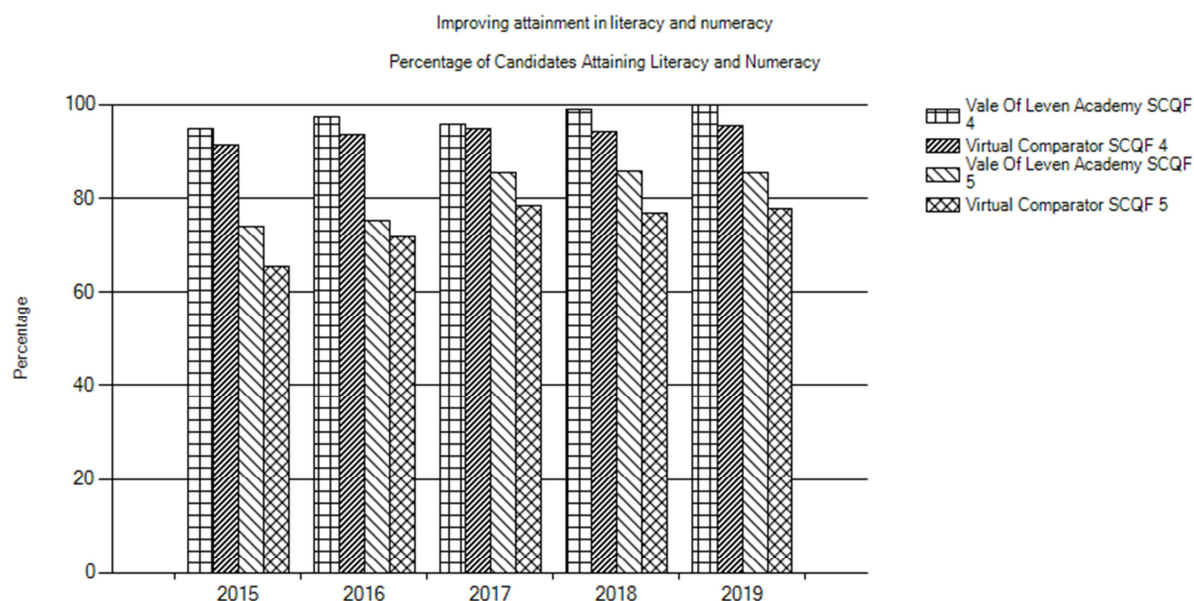


Testing found that the following comparisons were significant:

In SIMD decile 1, your performance is lower than the Virtual Comparator

Vale of Leven Academy

Percentage of S6 Candidates Attaining Literacy and Numeracy

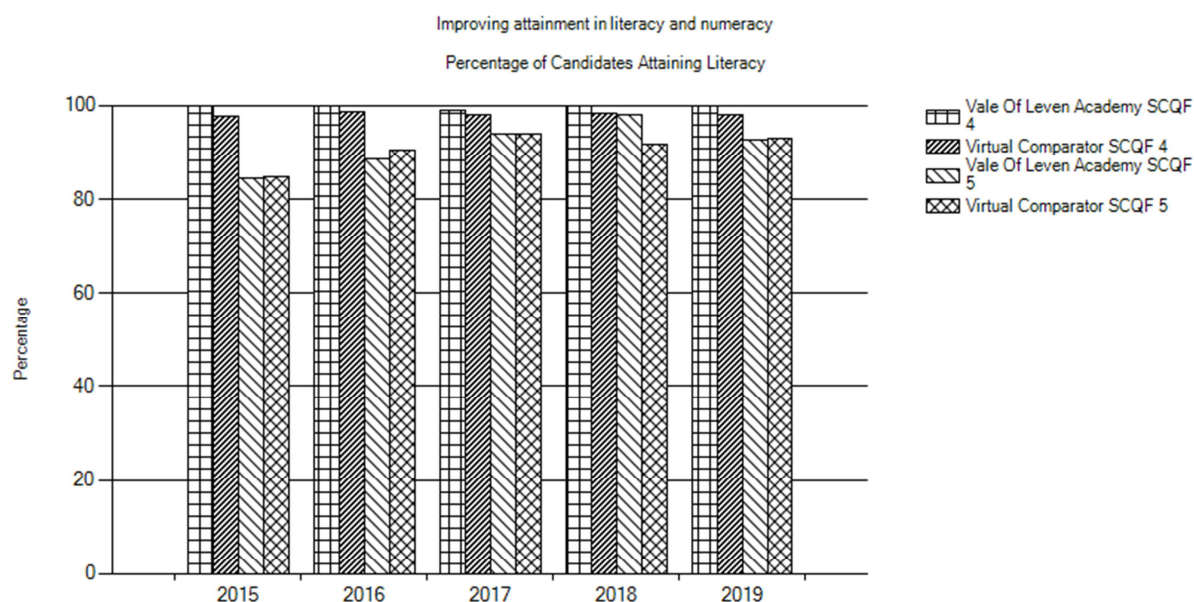


Testing found that the following comparisons were significant:

Performance in Literacy and Numeracy at SCQF Level 4, 2018 is much greater than your Virtual Comparator

Performance in Literacy and Numeracy at SCQF Level 5, 2018 is greater than your Virtual Comparator

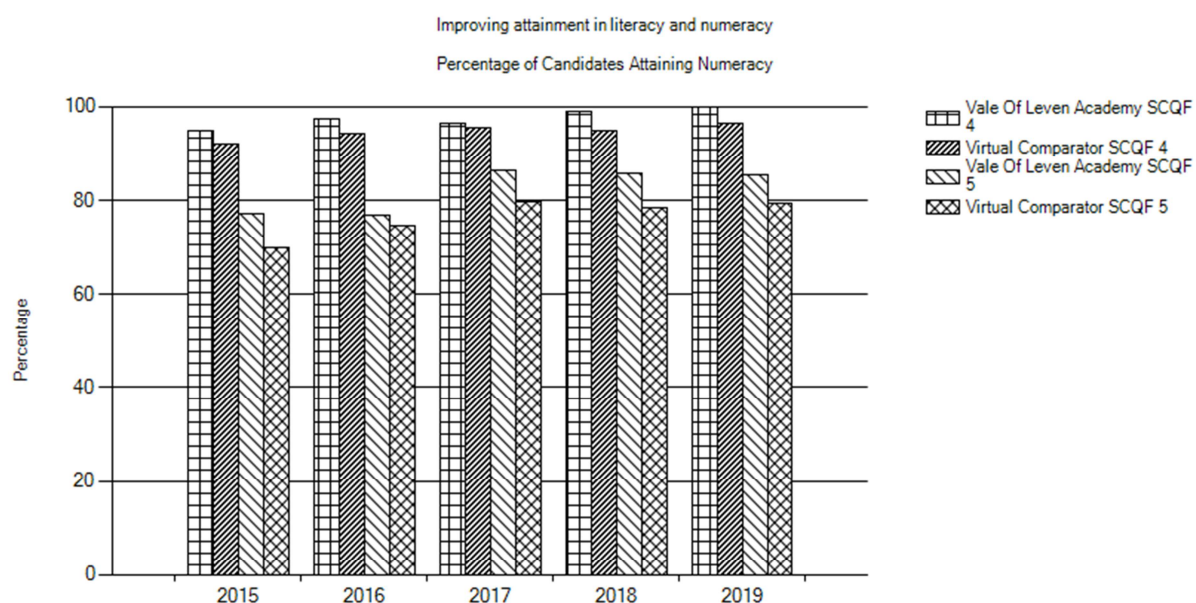
Percentage of S6 Candidates Attaining Literacy



Testing found that the following comparisons were significant:

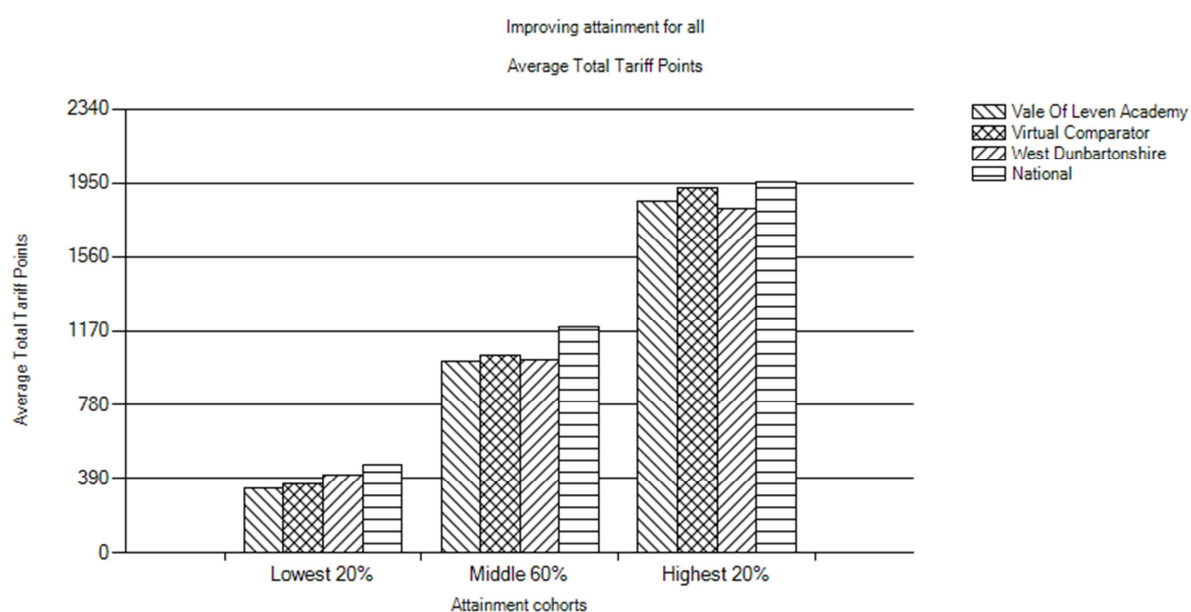
Performance in Literacy at SCQF Level 5, 2018 is much greater than your Virtual Comparator

Percentage of S6 Candidates Attaining Numeracy



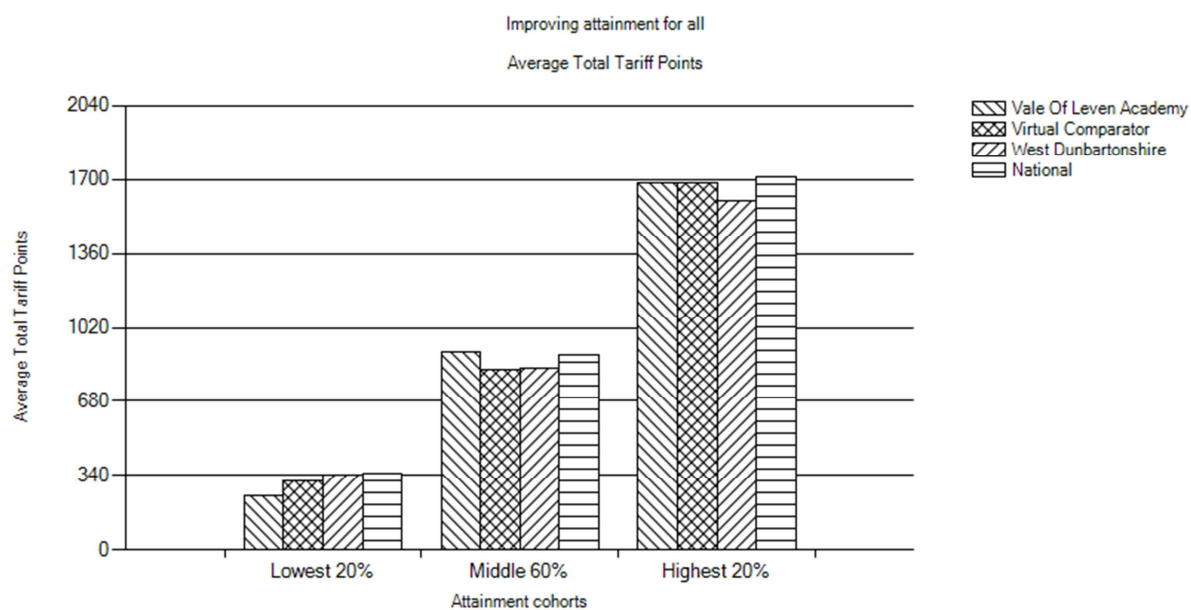
Testing found that there were no significant comparisons for this measure.

Improving Attainment for All – S6 2019



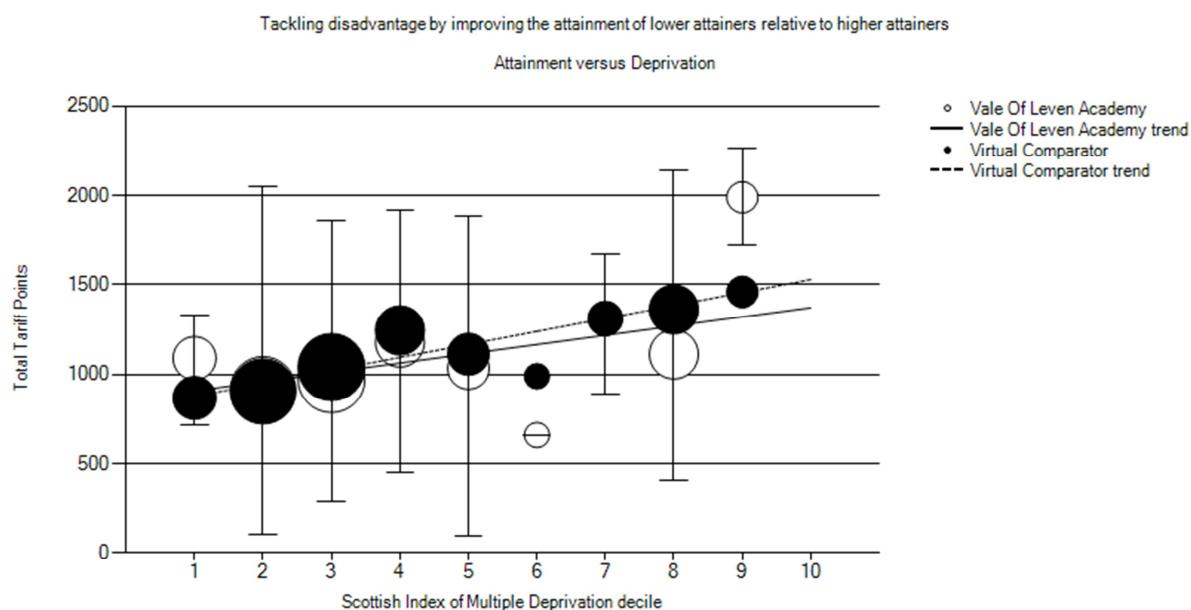
Testing found that there were no significant comparisons for this measure.

Improving Attainment for All – SIMD Quintile 1 (Most Deprived 20%) - S6 2019



The significance of comparisons was not tested.

Attainment versus Deprivation – S6 2019



Testing found that there were no significant comparisons for this measure.