

**Primaries in Alexandria**

Informal consultation meeting

Alexandria 2 consultation  
[3 Dec 2008]

---

---

---

---

---

---

---

---

**Primaries in Alexandria**

the basics  
maps  
options  
- separate  
- co-locate  
- merge  
- refurbish  
- new build  
- facilities  
- pros & cons  
group discussion

Informal consultation meeting

Alexandria 2 consultation  
[3 Dec 2008]

---

---

---

---

---

---

---

---

**The basics**

- School Capacities/Rolls
- Suitability
- Condition
- Value for money
- Affordability

Alexandria 2 consultation  
[3 Dec 2008]

---

---

---

---

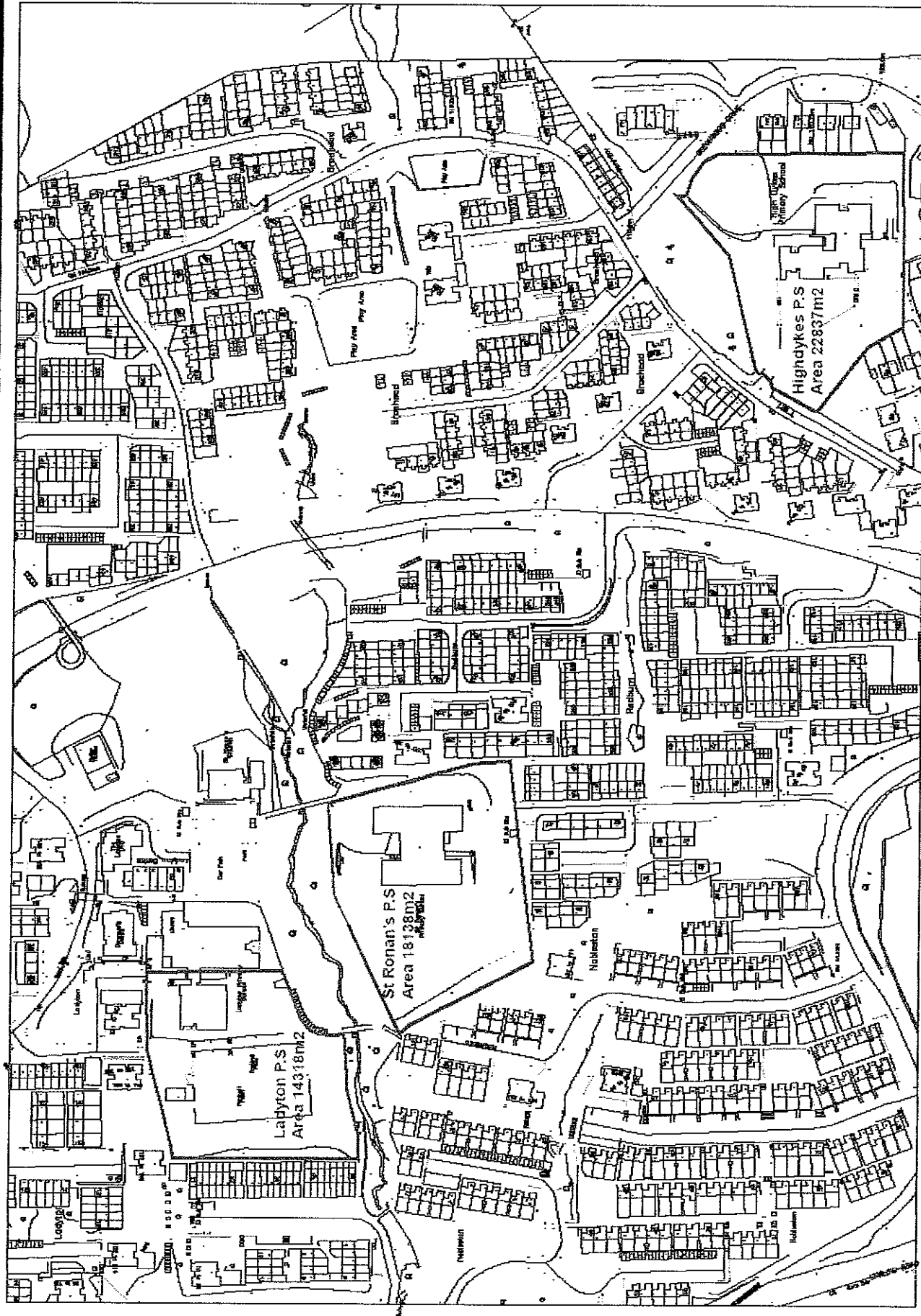
---

---

---

---









## Options

- Facilities
  - school; externals; extent of community use
- Pros/Cons
  - Separate schools: refurbish or new build
  - Co-locations: new build
  - Merge: refurbish or new build

Alexandria 2 consultation  
[3 Dec 2006]

---

---

---

---

---

---

---

---

---

---

## Group Discussion

- |   |   |
|---|---|
| <p><b>Group 1</b></p> <ul style="list-style-type: none"> <li>- Highdykes PS</li> <li>- Ladyton PS</li> <li>- St Ronan's PS</li> <li>- Gartocham PS</li> <li>- Ladyton EECC</li> <li>- Gartocham EECC</li> </ul> | <p><b>Group 2</b></p> <ul style="list-style-type: none"> <li>- Christie Park PS</li> <li>- Levenvale PS</li> <li>- Renton PS</li> <li>- St Martin's PS</li> <li>- St Mary's PS</li> <li>- Dalmonach EECC</li> <li>- Ferryfield EECC</li> <li>- Renton EECC</li> <li>- VOL EECC</li> </ul> |
|---|---|

Alexandria 2 consultation  
[3 Dec 2006]

---

---

---

---

---

---

---

---

---

---

Initial consultation paper on options for  
Primary 6 EECCs in Alexandria area

**DISCUSSION POINTS**

**School arrangements:**

1. Are you happy with your school building and its surroundings?  
(e.g. condition, suitability, site, internal/external facilities) Yes No

2. Would you be comfortable with: school size

a. Major refurbishment	Yes	No	Other
b. New build	<input type="checkbox"/>	<input type="checkbox"/>	<input type="checkbox"/>
c. Merge with another school (could be setup or new build)	<input type="checkbox"/>	<input type="checkbox"/>	<input type="checkbox"/>
d. Co-located schools (shared/combined/departments)	<input type="checkbox"/>	<input type="checkbox"/>	<input type="checkbox"/>

3. Generally, what other facilities would you like to see on campus?  
(please tick)

a. Community centre?	<input type="checkbox"/>	<input type="checkbox"/>
b. Public Library?	<input type="checkbox"/>	<input type="checkbox"/>
c. Sports Pitch(es)?	<input type="checkbox"/>	<input type="checkbox"/>
d. Other?	<input type="checkbox"/>	<input type="checkbox"/>

4. If no facilities were to be constructed:

a. what facilities would you expect to see in the campus and what could be shared?

b. what do you consider should not be shared?

---

---

---

---

---

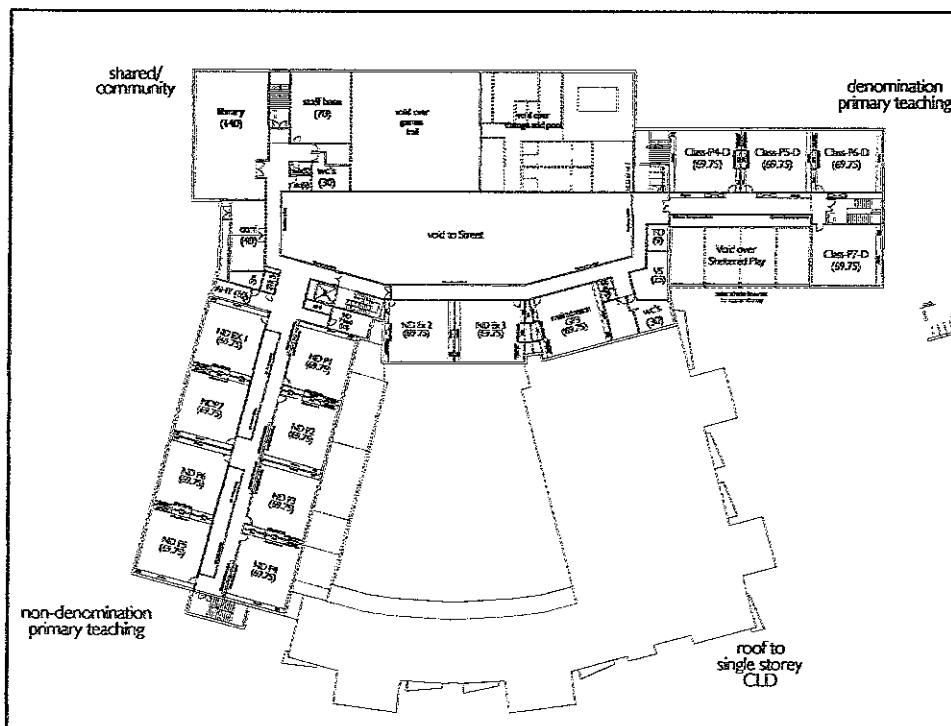
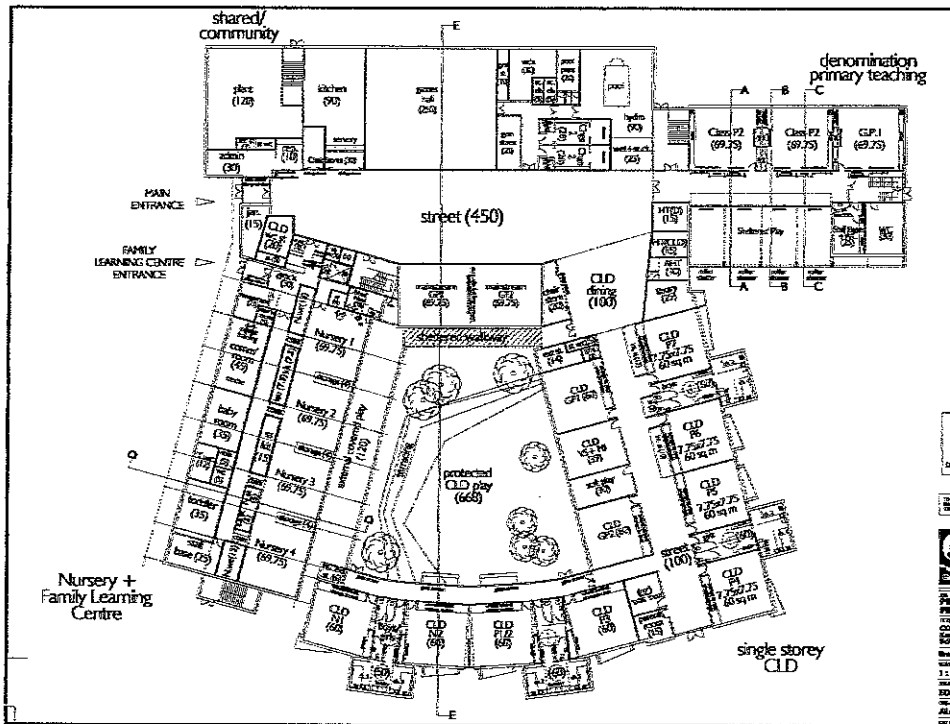
---

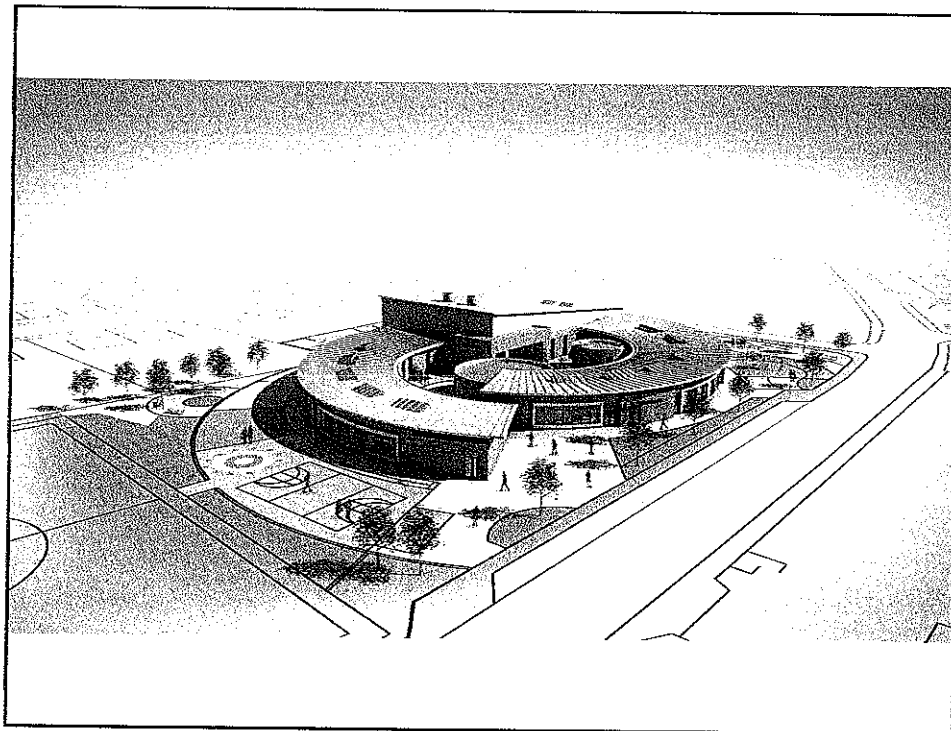
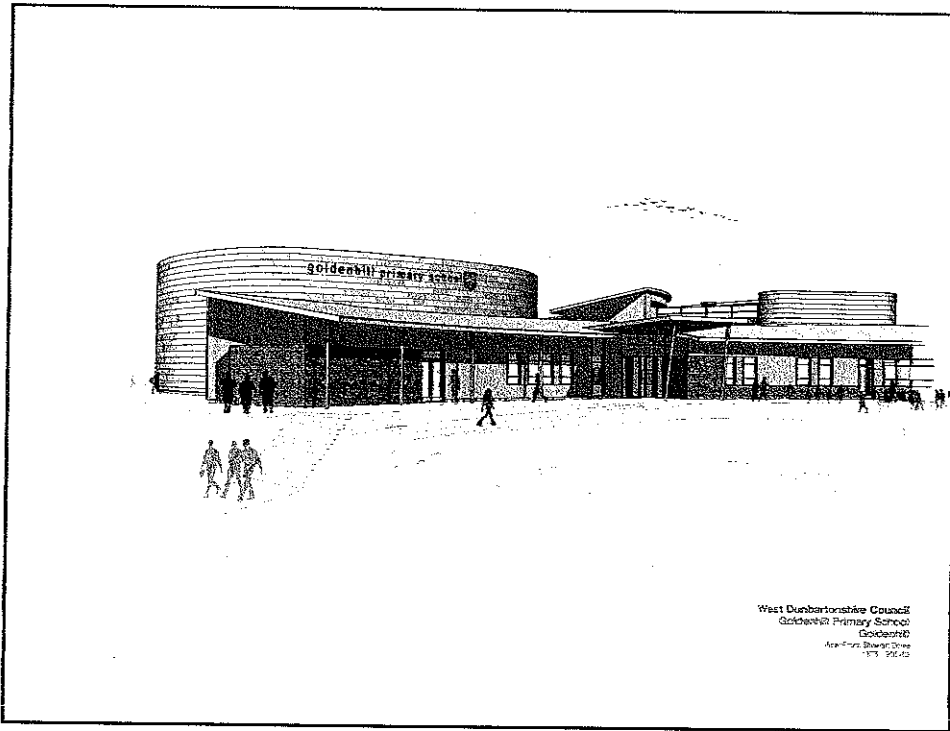
---

---

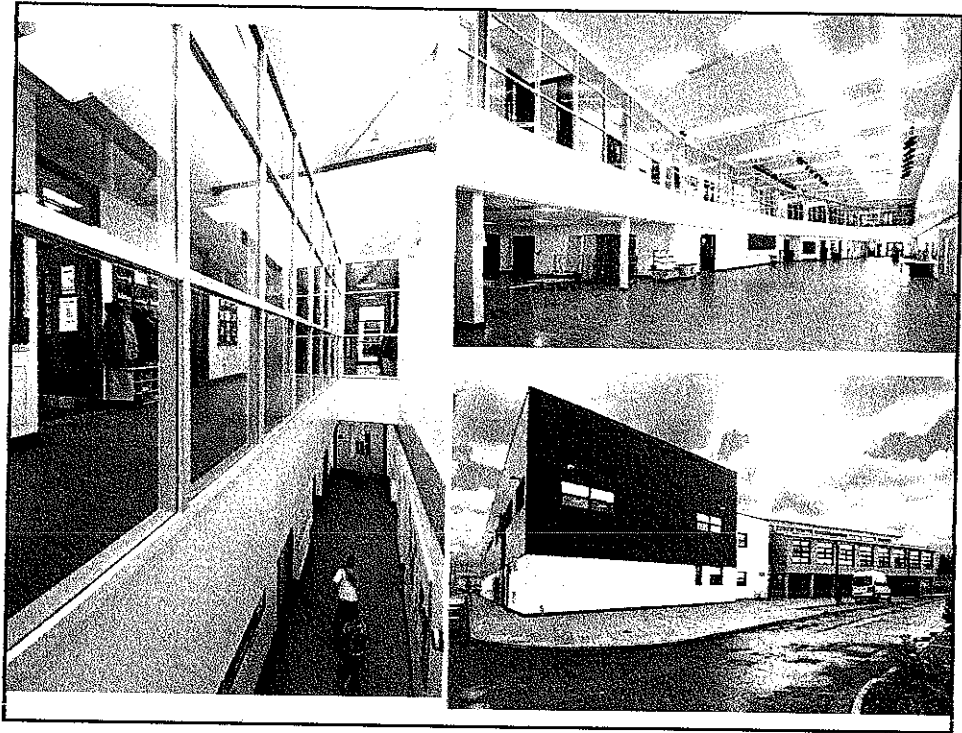
---

---









**FACTS AND FIGURES  
INFORMATION SHEET**

	Cost per pupil	Internal size m <sup>2</sup>	Capacity	Current roll	Projected roll (2014)	Condition/ Suitability
Highdykes PS	3,523	1,586	384	168	155	B/B
Ladyton PS	4,178	1,566	198	113	116	B/A
St Ronan's PS	4,856	2,324	295	85	80	B/B
Garfocharn PS	4,210	728	124	86	83	B/B
Christie Park PS	2,959	2,226	296	233	227	A/C
Levenvale PS	3,677	2,193	389	169	192	B/C
Renton PS	3,742	1,456	297	139	152	B/B
St Martin's PS	6,301	1,389	188	45	59	B/B
St Mary's PS	3,263	1,924	300	197	199	B/C

Dalmonach EECC	60/60		am/pm
Ferryfield EECC	51/51		am/pm
Ladyton EECC	40/40		am/pm
Renton EECC	60/60		am/pm
VOL EECC	31/31		am/pm