

# **Analysis of SLDR 2011/2012**

## 1. Headline Figures

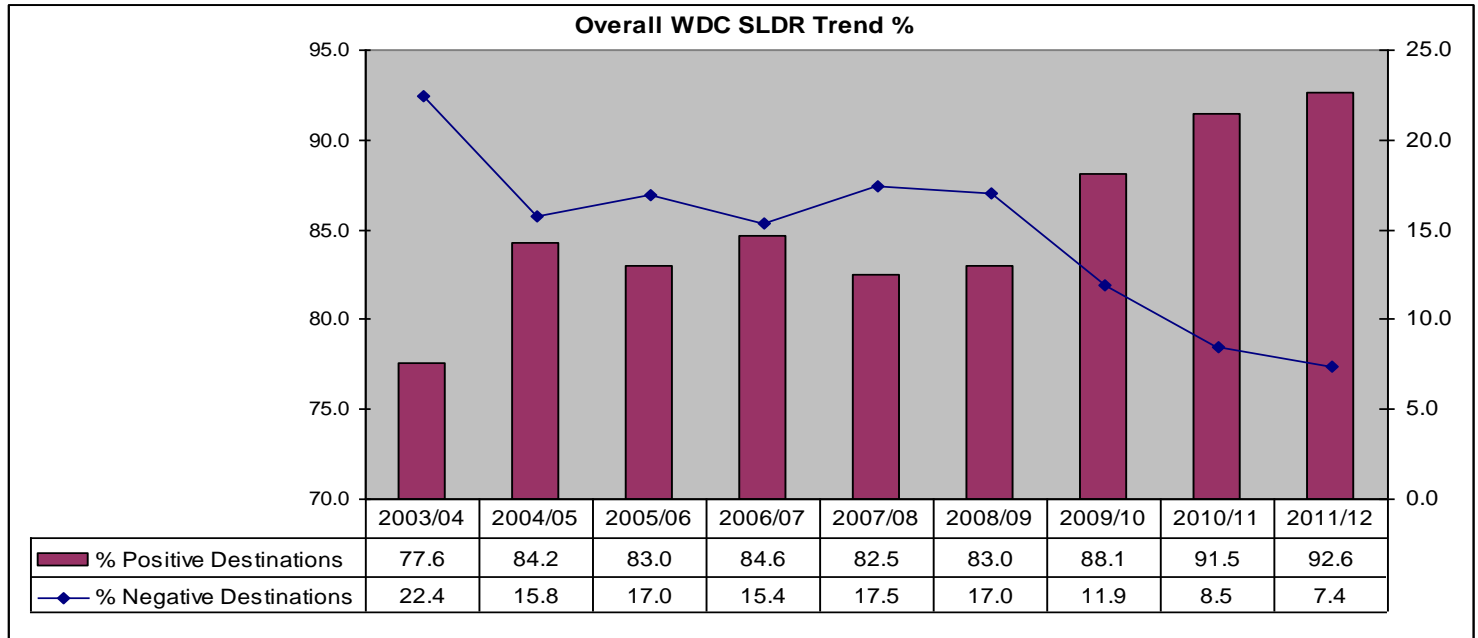
- The percentage of school leavers entering positive destinations has increased by 1.1% from 91.5% in 2010/11 to 92.6% in 2011/12.
- The percentage of school leavers from West Dunbartonshire in positive destinations is 2.7% higher than the national average of 89.9% in 2011/12. This is the 3<sup>rd</sup> year running that we have bettered the national average.
- The percentage of school leavers entering positive destinations has consistently increased from its low of 82.5% in 2007/08 to 92.6% in 2011/12.
- Young people in Higher Education increased by 6.1%, from 31.7% in 2010/11 to 37.8% in 2011/12
- The percentage of West Dunbartonshire leavers progressing to Higher Education is 0.5% higher than the national average of 37.3%
- Young people progressing to Further Education increased by 0.9% from 29.4% in 2010/11 to 30.3% in 2011/12.
- Young people in employment increased by 0.6% from 15.8% in 2010/11 to 16.4% in 2011/12
- Young people in training decreased by 5.8% from 12.4% in 2010/11 to 6.6% in 2011/12
- The percentage of leavers reported as “unemployed seeking” has consistently dropped from its high of 14% in 2007/08 to 6.3% in 2011/12.
- The percentage of school leavers from West Dunbartonshire in positive destination is 2.7% higher than the national average of 89.9% in 2011/12.
- The percentage of West Dunbartonshire school leavers in further education is 3.5% higher than the national average of 26.8%.
- The percentage of West Dunbartonshire leavers in training is 2% higher than the national average of 4.6%.
- The percentage of West Dunbartonshire leavers in employment is 3.4% lower than the national average of 19.8%.
- The percentage of West Dunbartonshire leavers in voluntary work is 0.1% lower than the national average of 0.4%.

- The percentage of West Dunbartonshire leavers in activity agreements is 0.3% higher than the national average of 0.9%.
- The percentage of West Dunbartonshire leavers who are “unemployed seeking” is 2.1% lower than the national average of 8.4%.
- The percentage of West Dunbartonshire leavers who are “unemployed not seeking” is 0.2% lower than the national average of 1.3%.
- West Dunbartonshire has no school leavers in the “destination unknown category”. However, at the national level, 0.4% of school leaver destinations are not known.

## 2. WDC SLDR Trend

The following figure 1 shows SLDR trend for the period 2003/04 to 2011/12

Figure: 1

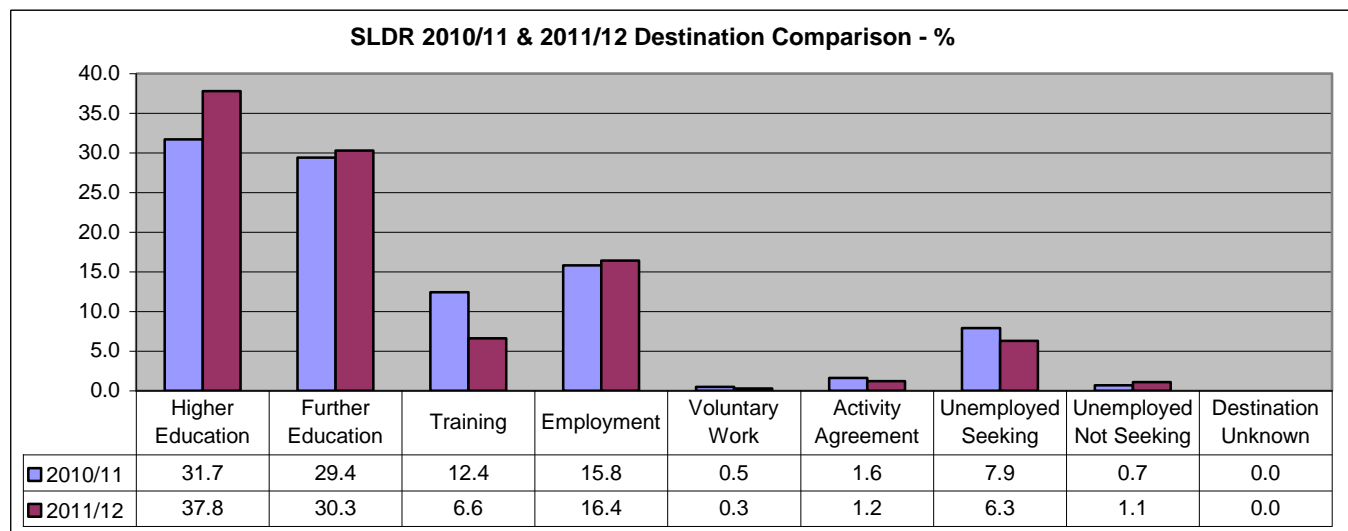


- Young people in positive destinations have increased by 1.1% in 2011/12 compared to 2010/11 SLDR.
- Young people in positive destinations have increased by 15% from its low of 77.6% in 2003/2004 to 92.6% in 2011/12.
- Since 2007/08 there has been steady increase in young people moving into positive destination.
- For the second consecutive year WDC SLDR broke the 90% barrier for positive destinations.

### 3. WDC SLDR Destination Comparison

The following figure 2 compares West Dunbartonshire school leaver destinations for SLDR 2010/11 and 2011/12.

Figure: 2



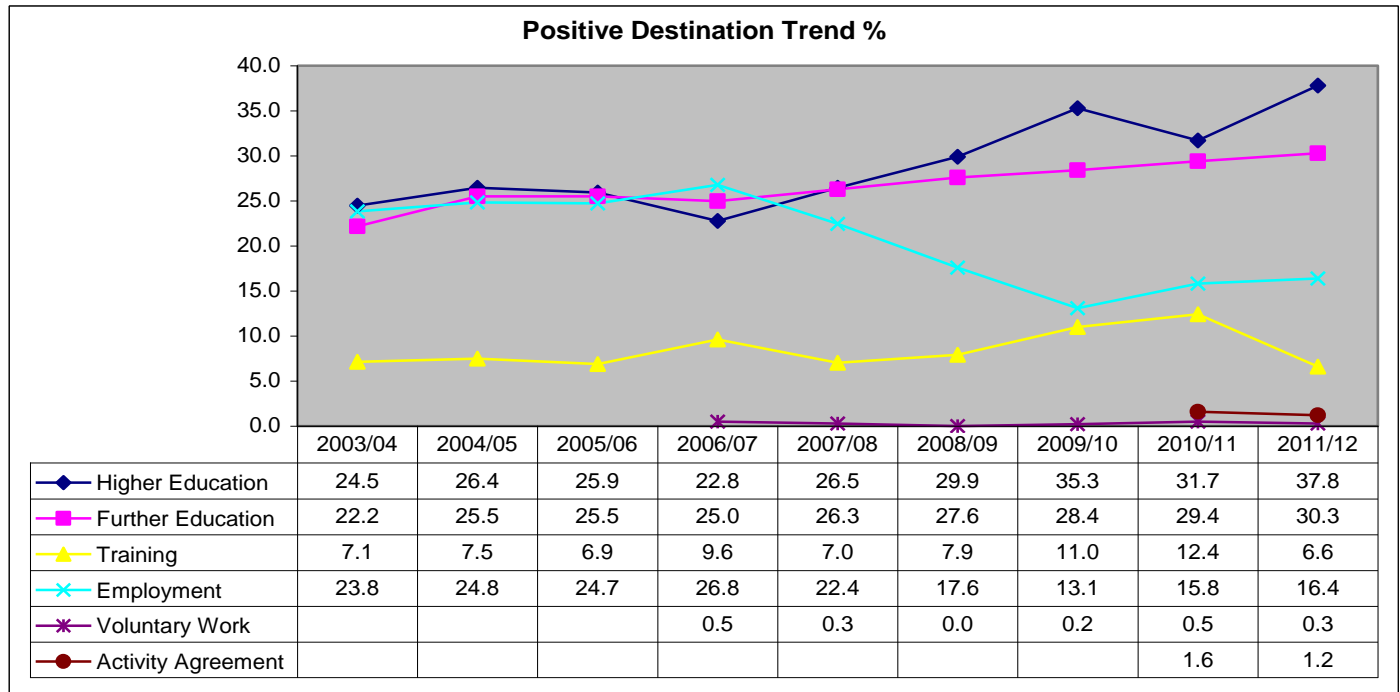
Compared to SLDR 2010/11

- Young people in higher education *increased* by 6.1%
- Young people in further education *increased* by 0.9%
- Young people in training *decreased* by 5.8%
- Young people in employment *increased* by 0.6%
- Young people in voluntary work *decreased* by 0.2%
- Young people in activity agreement *decreased* by 0.4%
- Young people reported as unemployed seeking *dropped* by 1.6%
- Young people reported as unemployed and not seeking *increased* by 0.4%
- For the last two years, no school leavers were reported in the unknown destination category.

#### 4. WDC Positive Destination Category Trend

Following figure 3 shows positive destination category trend from 2003/04 to 2011/12

Figure 3:

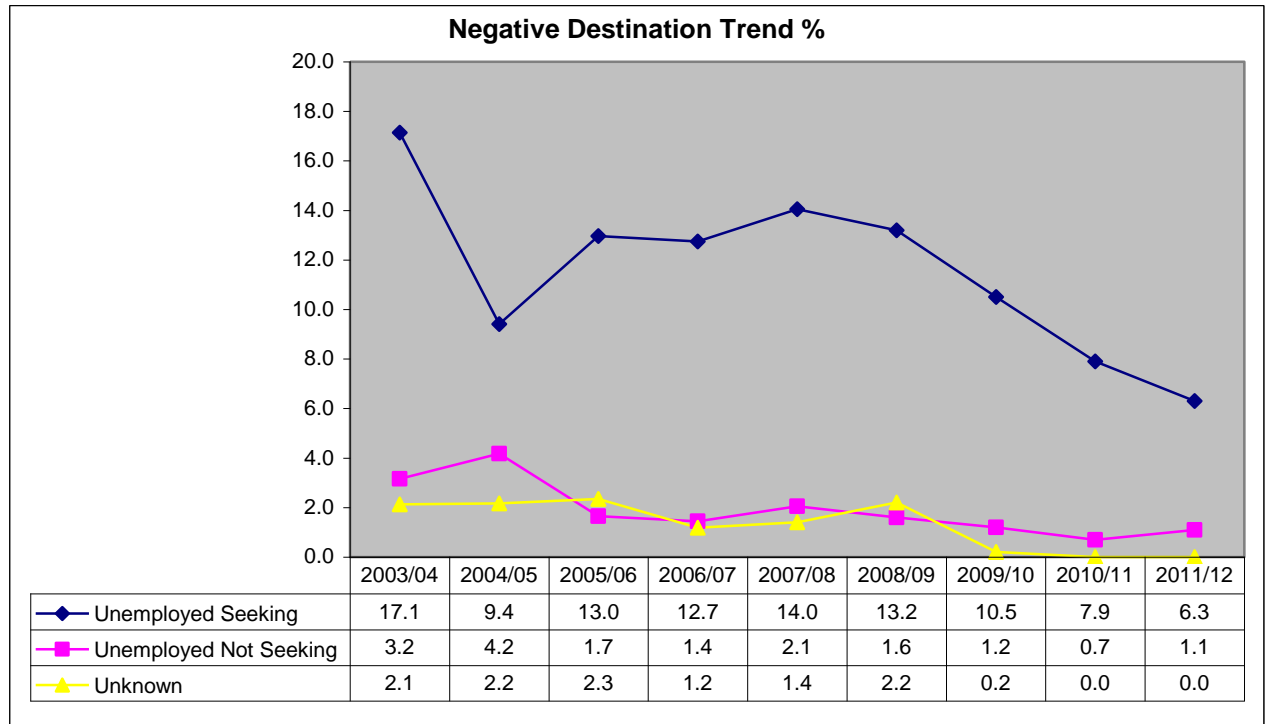


- Young people in higher education recorded an all time high of 37.8%.
- Young people in further education have consistently increased from 25% in 2006/07 to 30.3% in 2011/12.
- Young people in employment has increased year on year from 13.1% in 2009/10 to 16.4% in 2011/12.

## 5. WDC Negative Destination Category Trend

Following figure 4 shows negative destination trend from 2003/04 to 2011/12

Figure 4:

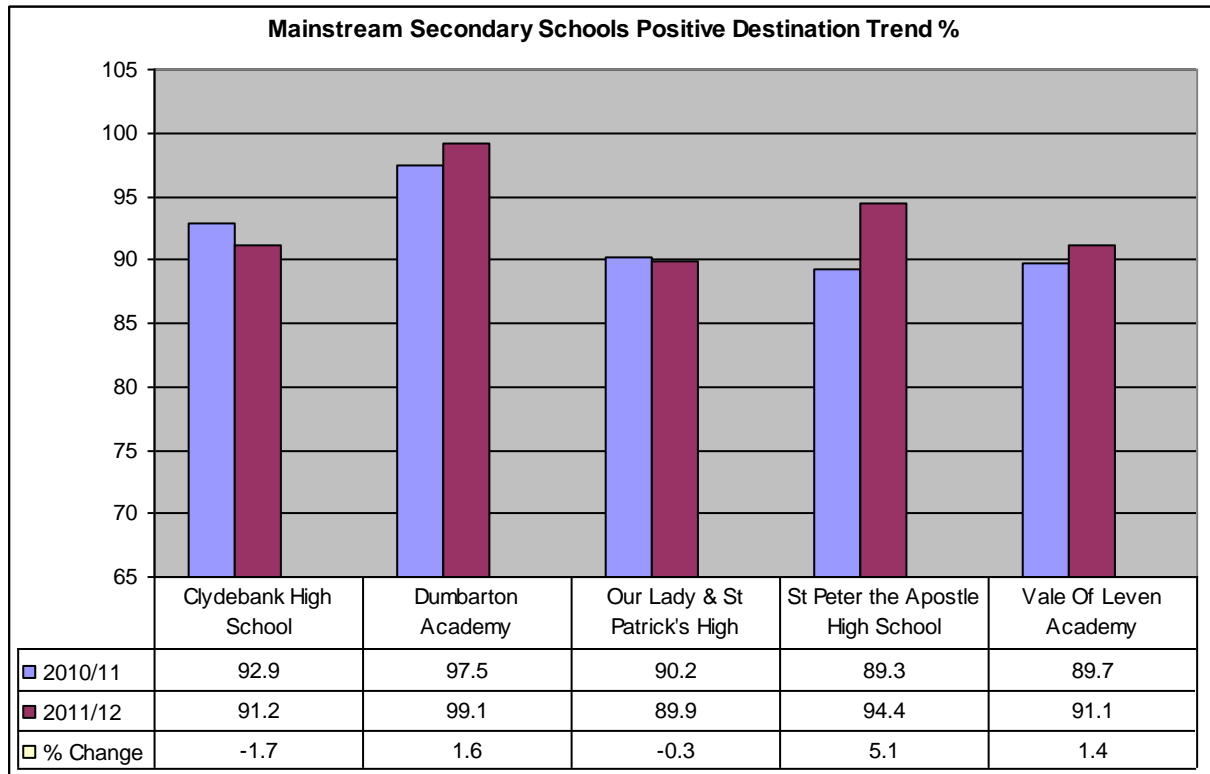


- Young people identified as unemployed but seeking employment or training has dropped consistently from 14% in 2007/08 to 6.3% in 2011/12.
- Young people identified as unemployed but not seeking employment or training has increased slightly by 0.4% from its low of 0.7% in 2010/11.
- For the last two years, no school leavers were recorded in the destination unknown category.

## 6. School Level Positive Destination Comparison

Following figure 5 compares positive destination trend from five secondary schools in West Dunbartonshire for 2010/11 & 2011/12

Figure 5:



- Dumbarton Academy, St Peter the Apostle High School and Vale of Leven Academy recorded increase in percentage of school leavers in positive destinations in 2011/12 compared to 2010/11.
- St Peter the Apostle High School recorded largest percentage increase (5.1%) in positive destinations.
- Dumbarton Academy recorded largest percentage, 99.1%, of school leavers in positive destination in 2011/12.



## 7. School Level Destination Category Comparison

Following figure 6 highlights schools which recorded positive and negative changes in school leavers destination category between SLDR 2010/11 and 2011/12.

Figure 6

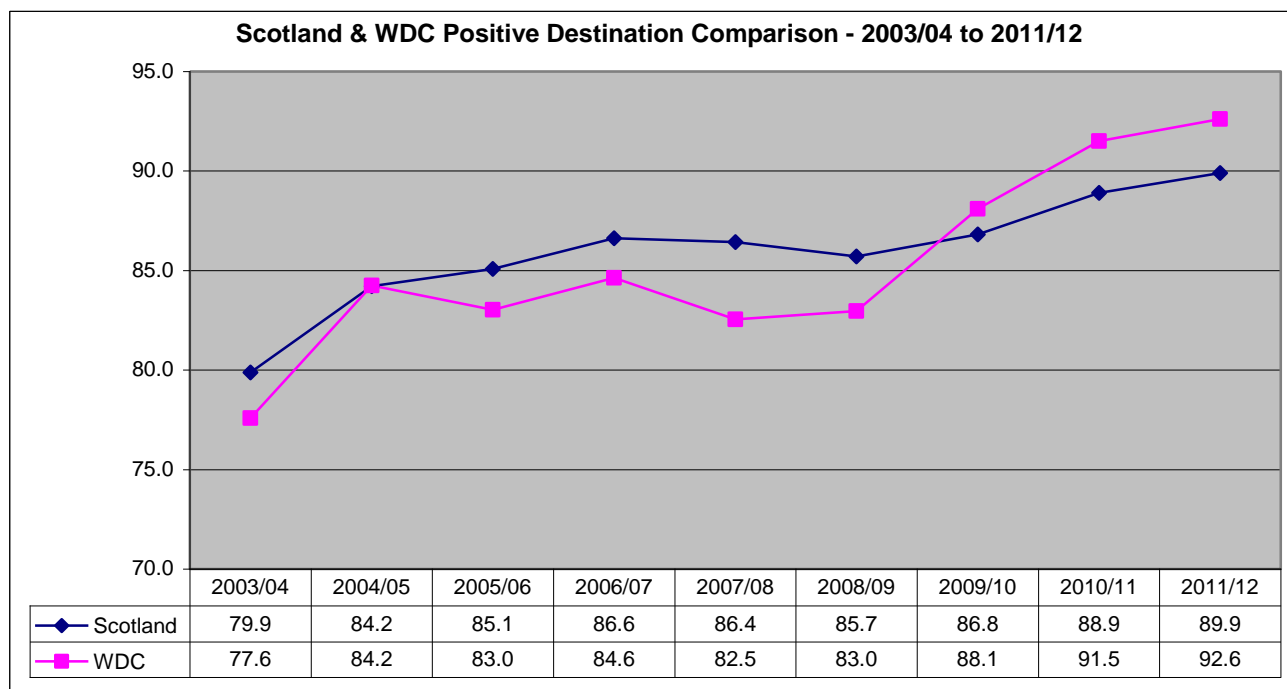
SLDR 2010/11 & 2011/12 - School Level Destination Category Comparison										
	Higher Education	Further Education	Training	Employment	Voluntary Work	Activity Agreements	Unemployed Seeking	Unemployed Not Seeking	Not Known	
2010-11	32.5	31.8	14.3	13.6	0.4	0.4	6.4	0.7	0.0	Clydebank High School
2011-12	30.3	34.9	8.0	16.8	0.0	1.3	7.6	1.3	0.0	
<b>Change %</b>	<b>-2.2</b>	<b>3.1</b>	<b>-6.3</b>	<b>3.2</b>	<b>-0.4</b>	<b>0.9</b>	<b>1.2</b>	<b>0.6</b>	<b>0.0</b>	
2010-11	36.9	32.0	13.1	10.7	2.5	2.5	2.5	0.0	0.0	Dumbarton Academy
2011-12	40.5	36.0	8.1	11.7	1.8	0.9	0.9	0.0	0.0	
<b>Change %</b>	<b>3.6</b>	<b>4.0</b>	<b>-5.0</b>	<b>1.0</b>	<b>-0.7</b>	<b>-1.6</b>	<b>-1.6</b>	<b>0.0</b>	<b>0.0</b>	
2010-11	34.2	22.3	9.2	18.5	0.5	5.4	8.7	1.1	0.0	Our Lady & St Patrick's High
2011-12	45.5	21.7	5.6	16.7	0.0	0.5	9.6	0.5	0.0	
<b>Change %</b>	<b>11.3</b>	<b>-0.6</b>	<b>-3.6</b>	<b>-1.8</b>	<b>-0.5</b>	<b>-4.9</b>	<b>0.9</b>	<b>-0.6</b>	<b>0.0</b>	
2010-11	33.9	25.3	11.8	17.6	0.0	0.7	10.0	0.7	0.0	St Peter the Apostle High School
2011-12	39.9	29.2	6.4	16.7	0.0	2.1	4.3	1.3	0.0	
<b>Change %</b>	<b>6.0</b>	<b>3.9</b>	<b>-5.4</b>	<b>-0.9</b>	<b>0.0</b>	<b>1.4</b>	<b>-5.7</b>	<b>0.6</b>	<b>0.0</b>	
2010-11	19.2	39.1	13.5	17.3	0.0	0.6	9.6	0.6	0.0	Vale Of Leven Academy
2011-12	34.8	31.6	5.1	18.4	0.6	0.6	7.0	1.9	0.0	
<b>Change %</b>	<b>15.6</b>	<b>-7.5</b>	<b>-8.4</b>	<b>1.1</b>	<b>0.6</b>	<b>0.0</b>	<b>-2.6</b>	<b>1.3</b>	<b>0.0</b>	

- Clydebank High School recorded an increase in the percentage of leavers in further education, employment and activity agreements by 3.1%, 3.2% and 0.9% respectively. It is one of three schools from which school leavers moving into employment increased compared to the previous year.
- Dumbarton Academy recorded an increase in the percentage of pupils in higher education, further education and employment by 3.6%, 4% and 1% respectively. The percentage of pupils in the “unemployed seeking” category at its current level 0.9%, (1 school leaver), and the fact that there are no school leavers in the “unemployed not seeking” category are outstanding results.
- Our Lady and St Patrick’s High School recorded second largest increase of 11.3%, of school leavers moving into higher education.
- St Peter the Apostle High School had an increase in the percentage of leavers in higher education, further education and activity agreements by 6%, 3.9% and 1.4% respectively. The school also recorded biggest drop of 5.7% of school leavers identified as “unemployed seeking”.
- Vale of Leven Academy recorded the largest increase, 15.6%, of school leavers moving into Higher Education. The school also recorded the biggest drop in school leavers moving into further education and training by 7.5% and 8.4% respectively.

## 8. Scotland and WDC Destination Comparison - Trend

The following figure 7 compares school leavers' positive destination trend at national and local level for the period 2003/04 to 2011/12.

Figure 7

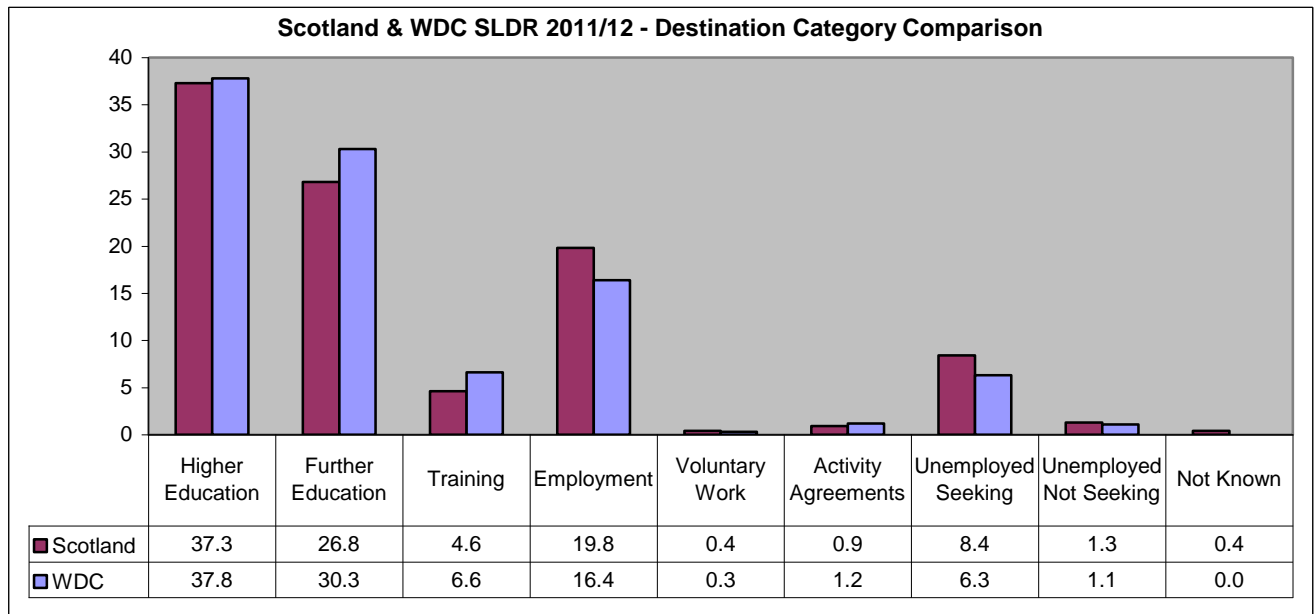


- From 2003/04 until 2008/09, the percentage of school leavers from West Dunbartonshire secondary schools in positive destination was below the national average (except in 2004.05 when it matched the national average). However, this trend has reversed since 2009/10 as West Dunbartonshire has consistently performed above the national average.

## 9. Scotland and WDC Destination Category Comparison - SLDR 2011/12

Following figure 8 compares SLDR 2011/12 destination category at the national and local level.

Figure 8



- The Scottish average was better than West Dunbartonshire in employment and voluntary work.
- West Dunbartonshire performed better than the national average in higher education, further education, training, activity agreements, unemployed seeking, unemployed not seeking and destination not known categories.