

**Analysis of  
West Dunbartonshire  
School leavers Destination Report  
2010/2011**

## **School leavers Destination Report**

**2010/2011**

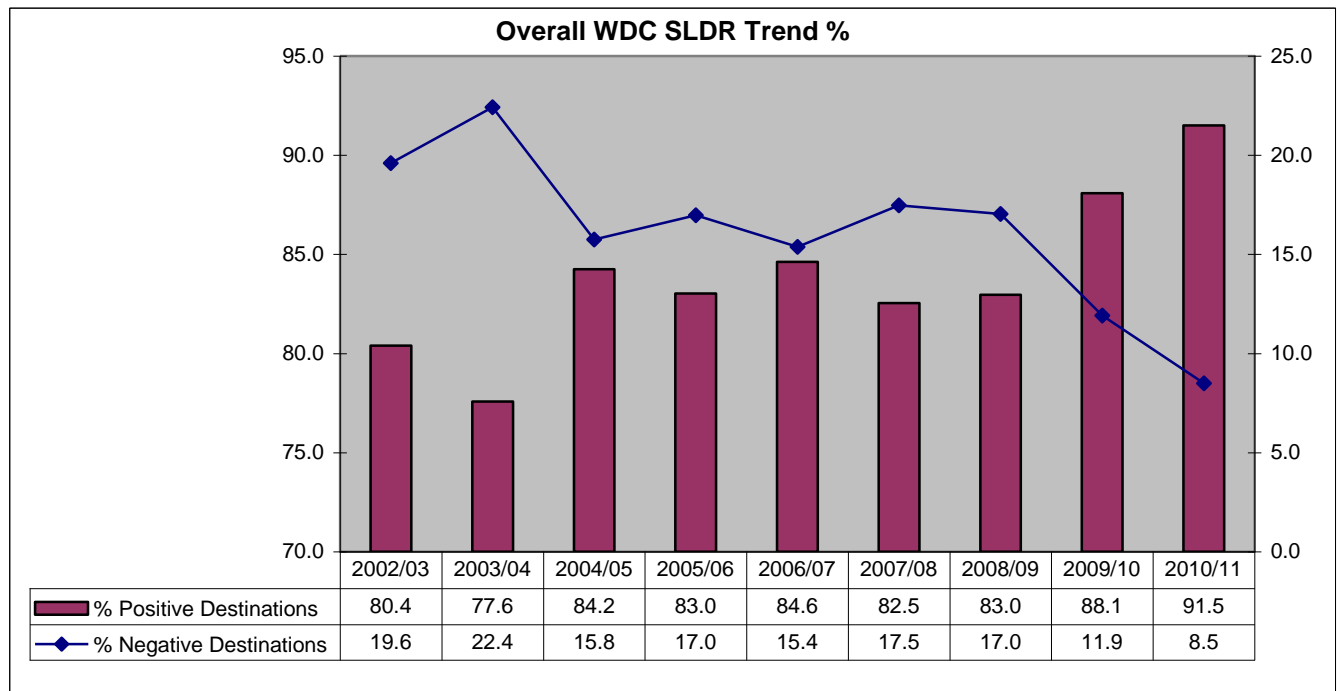
### **1. Headline Figures**

- School leavers entering positive destination has increased by 3.4% to 91.5% in 2010/2011 compared to 88.1% in 2009/2010.
- We have managed to record a steady increase of young people moving into positive destination since SLDR 2007/08.
- The number of young people moving into positive destination increased by 63 from 880 in 2009/2010 to 943 in 2010/2011.
- Young people moving into employment increased by 2.7% with a 1.4% increase in training compared to SLDR 2009/10.
- Percentage of young people reported moving into Higher Education has decreased by 3.6%
- Percentage of young people reported as unemployed seeking and not seeking has consistently dropped since 2007/08.
- For the first time there were no young people in the unknown destination category on SLDR 2010/11.
- For the last two consecutive years, West Dunbartonshire has managed to perform better than the national average for school leavers moving into positive destinations
- West Dunbartonshire ranks 7<sup>th</sup> among 32 local authorities for school leavers moving into positive destinations.

## 2. WDC SLDR Trend

Following figure 1 shows SLDR trend for the period 2002/03 to 2010/11

Figure: 1

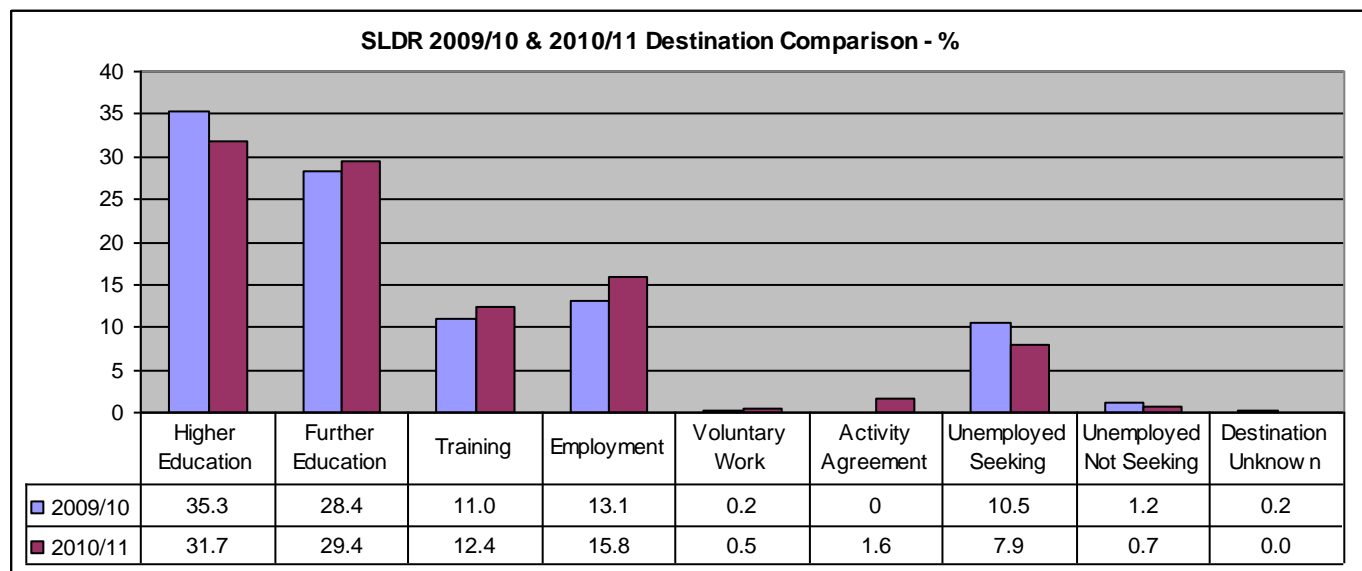


- Young people moving into positive destinations have increased by 3.4% in 2010/11 compared to 2009/10 SLDR.
- Young people recorded in negative destinations have dropped by 13.5% from its high of 22% in 2003/2004 to 8.5% in 2010/11.
- Since 2007/08 there has been an increase in the number of young people moving into positive destination.
- For the first time WDC SLDR crossed the 90% threshold

### 3. WDC SLDR Destination Comparison

Following figure 2 compares destinations of young people on SLDR 2009/10 and 2010/11.

Figure: 2



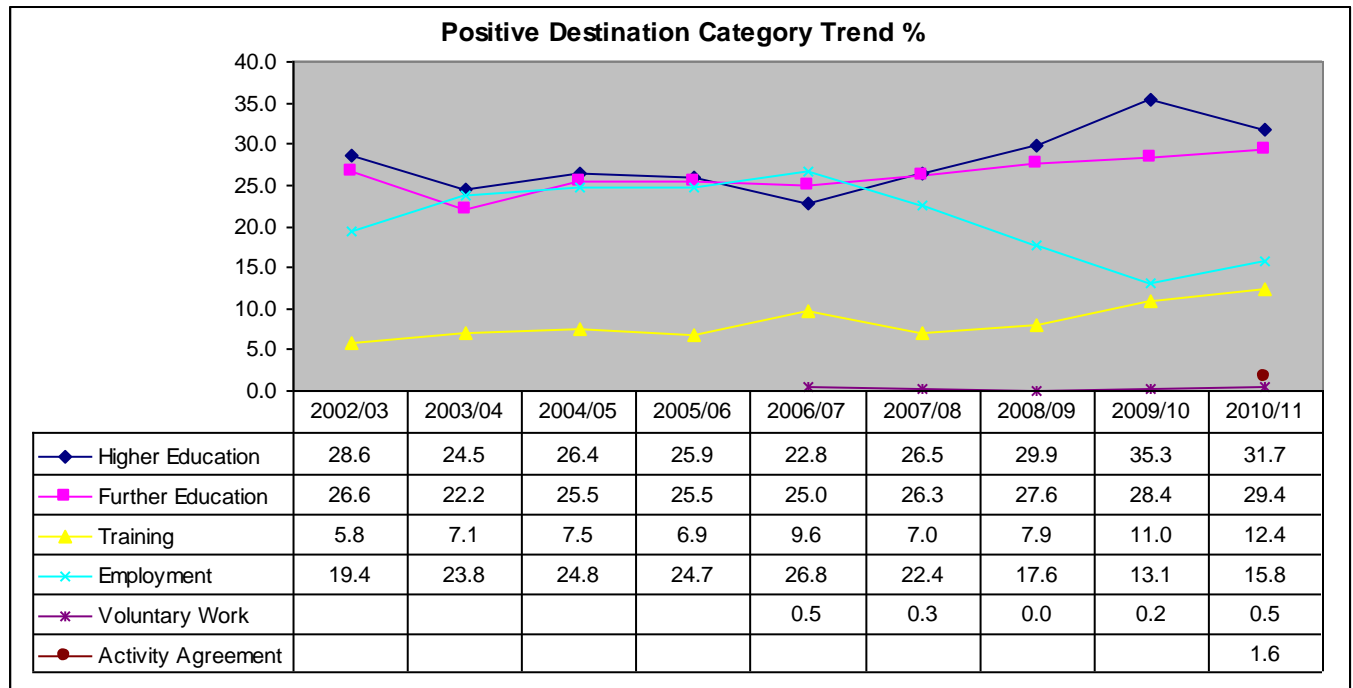
Compared to SLDR 2009/10

- Young people in higher education decreased by 3.6%
- Young people in further education increased by 1%
- Young people in training increased by 1.4%
- Young people in employment increased by 2.7%
- Young people in voluntary work increased by 0.3%
- Young people in activity agreement stands at 1.6%. This category has been added to the SLDR for the first time this year.
- Young people reported unemployed seeking dropped by 2.6%
- Young people reported unemployed and not seeking dropped by 0.5%
- Young people in destination unknown category decreased by 0.2%;  
(There are no school leavers recorded in this category)

#### 4. WDC Positive Destination Category Trend

Following figure 3 shows positive destination category trend from 2002/03 to 2010/11

Figure 3:

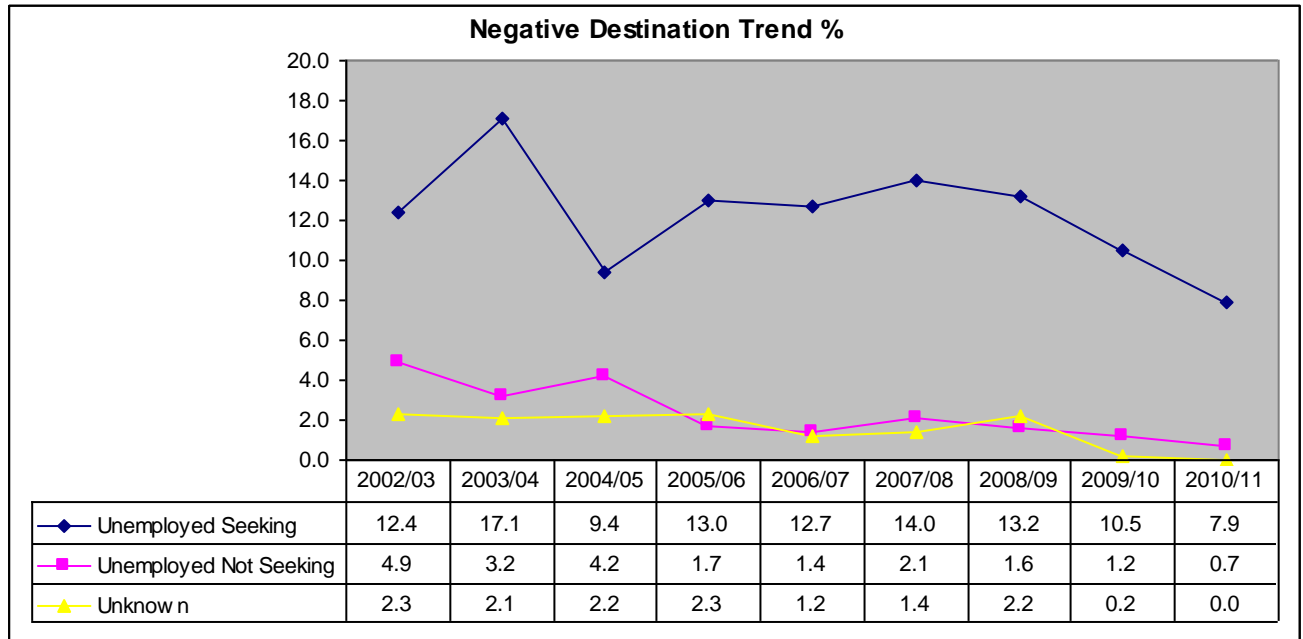


- Young people in further education recorded an all time high of 29.4%
- Young people in employment showed an increase of 2.7%, compared to SLDR 2009/10. Increase in employment figures have been recorded for the first time since 2007/08.
- There has been a steady increase of young people in training since 2007/08 SLDR. Young people in training also recorded an all time high of 12.4%.

## 5. WDC Negative Destination Category Trend

Following figure 4 shows negative destination trend from 2002/03 to 2010/11

Figure 4:

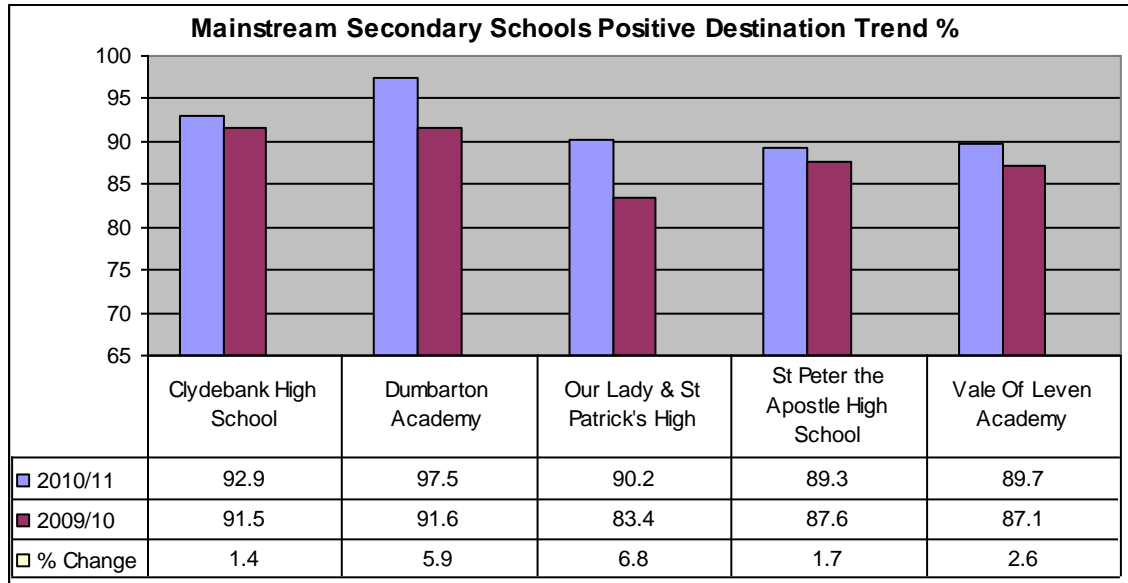


- Young people reported as unemployed but seeking employment or training has dropped by 9.2% in 2010/11 from its high of 17.1% in 2003/04. There has been a consistent decrease in their percentage from 2007/08 onwards.
- Young people reported as unemployed but not seeking employment or training has dropped by 4.2% in 2010/11 from its high of 4.9% in 2002/03. There has been a consistent decrease in their percentage from 2007/08 onwards.
- For the first time no school leavers were recorded in the destination unknown category.

## 6. WDC Mainstream Schools Positive Destination Trend

Following figure 5 compares positive destination trend from five secondary schools in West Dunbartonshire for 2009/10 & 2010/11

Figure 5:



- All five secondary schools recorded increased overall percentage of school leavers in positive destination in 2010/11 compared to 2009/10.
- In 2010/11 Our Lady and St Patrick's High recorded largest percentage (6.8%) increase in positive destination compared to 2009/10.

## 7. WDC SLDR Destination Category Comparison

Following figure 6 shows positive and negative changes in destination between SLDR 2009/10 and 2010/11 for each secondary school.

Figure 6

SLDR 2009/10 & 2010/11 - Change in Destination										
	Higher Education	Further Education	Training	Employment	Voluntary Work	Activity Agreements	Unemployed Seeking	Unemployed Not Seeking	Not Known	
2009-10	37.9	36.2	8.5	8.5	0.4	0	6.7	1.8	0.0	Clydebank High School
2010-11	32.5	31.8	14.3	13.6	0.4	0.4	6.4	0.7	0.0	
<b>Change %</b>	<b>-5.4</b>	<b>-4.4</b>	<b>5.8</b>	<b>5.1</b>	<b>0.0</b>	<b>0.4</b>	<b>-0.3</b>	<b>-1.1</b>	<b>0.0</b>	
2009-10	37.8	25.2	13.4	14.3	0.8	0	7.6	0.8	0.0	Dumbarton Academy
2010-11	36.9	32.0	13.1	10.7	2.5	2.5	2.5	0.0	0.0	
<b>Change %</b>	<b>-0.9</b>	<b>6.8</b>	<b>-0.3</b>	<b>-3.6</b>	<b>1.7</b>	<b>2.5</b>	<b>-5.1</b>	<b>-0.8</b>	<b>0.0</b>	
2009-10	36.5	22.7	8.8	15.5	0.0	0	14.4	1.1	1.1	Our Lady & St Patrick's High
2010-11	34.2	22.3	9.2	18.5	0.5	5.4	8.7	1.1	0.0	
<b>Change %</b>	<b>-2.3</b>	<b>-0.4</b>	<b>0.4</b>	<b>3.0</b>	<b>0.5</b>	<b>5.4</b>	<b>-5.7</b>	<b>0.0</b>	<b>-1.1</b>	
2009-10	34.3	23.7	15.7	13.9	0.0	0	10.9	1.5	0.0	St Peter the Apostle High School
2010-11	33.9	25.3	11.8	17.6	0.0	0.7	10.0	0.7	0.0	
<b>Change %</b>	<b>-0.4</b>	<b>1.6</b>	<b>-3.9</b>	<b>3.7</b>	<b>0.0</b>	<b>0.7</b>	<b>-0.9</b>	<b>-0.8</b>	<b>0.0</b>	
2009-10	31.3	33.3	8.0	14.4	0.0	0	12.4	0.5	0.0	Vale Of Leven Academy
2010-11	19.2	39.1	13.5	17.3	0.0	0.6	9.6	0.6	0.0	
<b>Change %</b>	<b>-12.1</b>	<b>5.8</b>	<b>5.5</b>	<b>2.9</b>	<b>0.0</b>	<b>0.6</b>	<b>-2.8</b>	<b>0.1</b>	<b>0.0</b>	



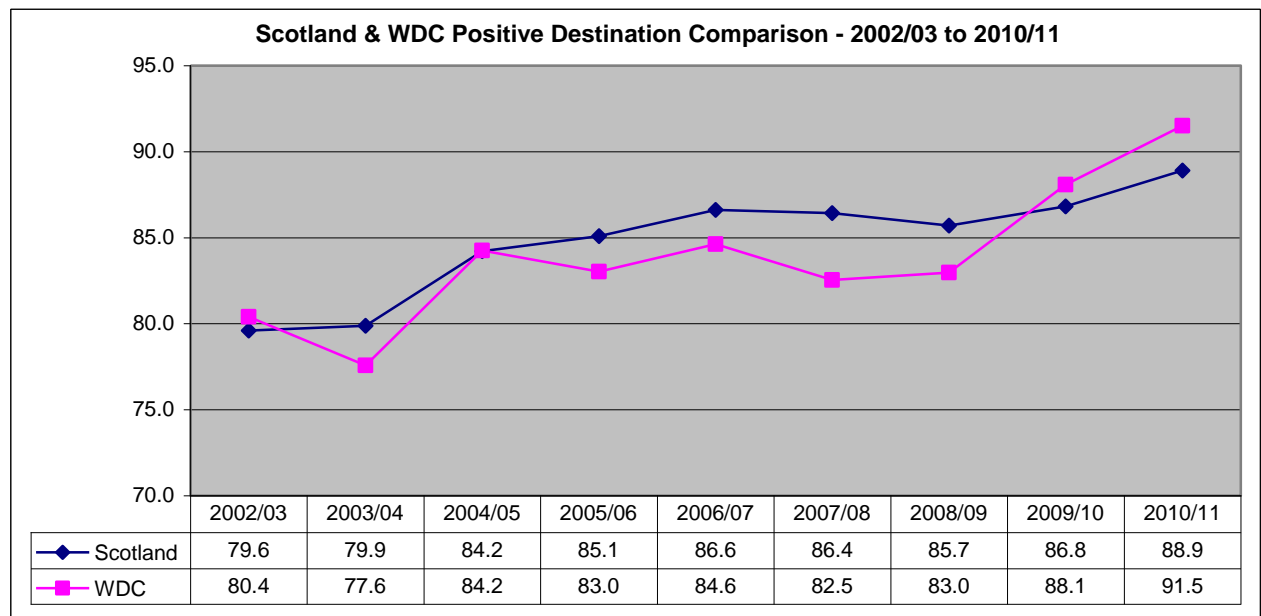
## **Compared to five mainstream secondary schools**

- Clydebank High school recorded both a 5.5% drop in Higher education and a 4.4% drop in school leavers in further education. However, school leavers in training and employment increased by 5.8% and 5.1% respectively. The school also recorded 1.1% drop in young people considered to be unemployed and not seeking education or training.
- Dumbarton academy recorded 3.6% drop in school leavers entering employment. The decline was partly offset by 6.8% rise in further education and 1.7% rise in voluntary work. The school also recorded a 5.7% decrease in the number of young people unemployed seeking.
- 5.4% of school leavers from Our Lady and St Patrick's high school signed up for activity agreement. The school also recorded 5.7% drop in young people identified as unemployed seeking.
- St Peter the Apostle high school recorded 3.9% drop in school leavers in training. This was offset by 3.7% increase in employment.
- Vale of Leven academy recorded a 12.1% drop in school leavers moving into higher education. However, the school recorded largest percentage (39.1%) of school leavers in further education and a 5.5% increase for those entering training.

## 8. Scotland and WDC Destination Comparison - Trend

Following figure 7 compares school leaver's positive destination trend at national and local level for the period 2002/03 to 2010/11.

Figure 7

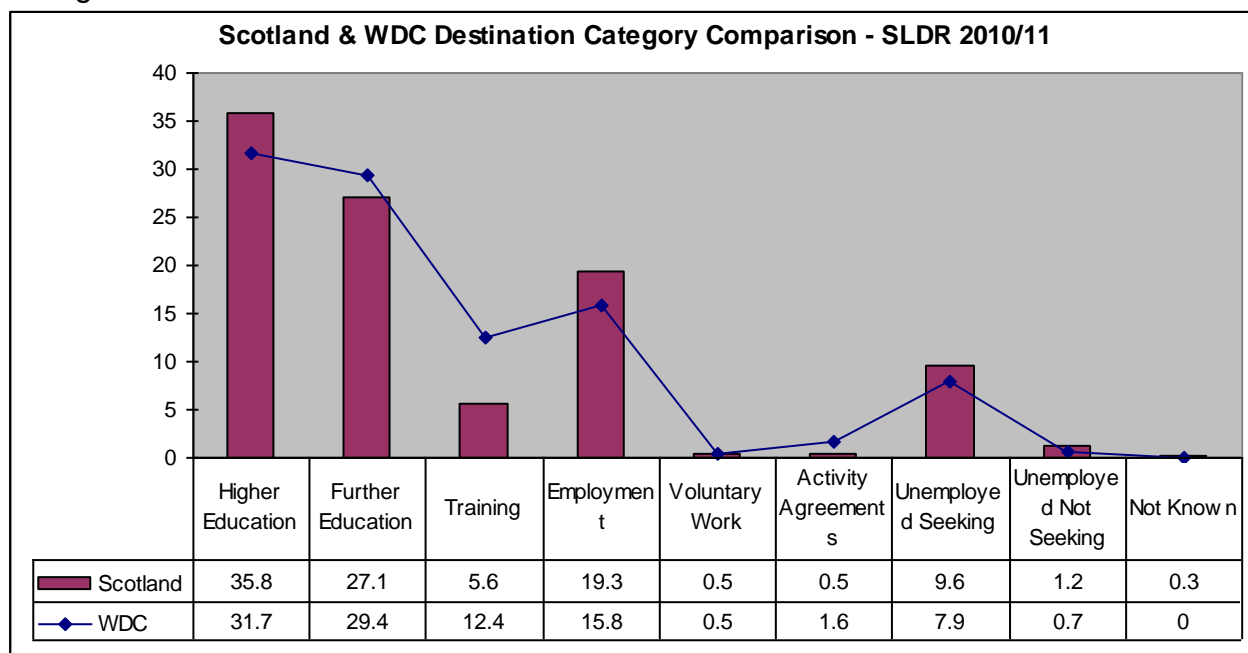


- Since 2003/04, school leavers from West Dunbartonshire secondary schools in positive destination were below the national average. However, since 2009/10 we have managed to reverse this trend.

## 9. Scotland and WDC Destination Category Comparison - SLDR 2010/11

Following figure 8 compares SLDR 2010/11 destination category at the national and local level.

Figure 8



- Scottish average was better than West Dunbartonshire in higher education and employment.
- West Dunbartonshire performed above the national average in further education, training, activity agreements, unemployed seeking, unemployed not seeking and destination not known categories.

## 10. WDC Comparison with other Local Authorities - SLDR 2010/11

Following figure 9 ranks thirty two local authorities in Scotland based on the positive destination of school leavers.

Figure 9

### Local Authority Rankings - SLDR 2010/11

LA Name	Positive Destinations	Ranking
East Renfrewshire	93.3	1
East Dunbartonshire	93.1	2
Eilean Siar	92.6	3
Scottish Borders	92.3	4
Aberdeenshire	92.2	5
Fife	91.8	6
West Dunbartonshire	91.5	7
Shetland Islands	90.9	8
North Ayrshire	90.7	9
Perth & Kinross	90.7	9
Argyll & Bute	89.8	11
South Ayrshire	89.7	12
Highland	89.4	13
Orkney Islands	89.3	14
Renfrewshire	89.3	14
Angus	89.0	16
West Lothian	89.0	16
Dundee City	88.7	18
East Ayrshire	88.4	19
Inverclyde	88.4	19
Moray	88.4	19
Dumfries & Galloway	88.3	22
Stirling	88.2	23
Falkirk	87.9	24
Edinburgh City	87.4	25
South Lanarkshire	87.4	25
East Lothian	86.8	27
Glasgow City	86.4	28
North Lanarkshire	85.9	29
Aberdeen City	85.6	30
Midlothian	85.2	31
Clackmannanshire	84.8	32

- West Dunbartonshire ranks 7<sup>th</sup> among 32 local authorities for school leavers moving into positive destination.